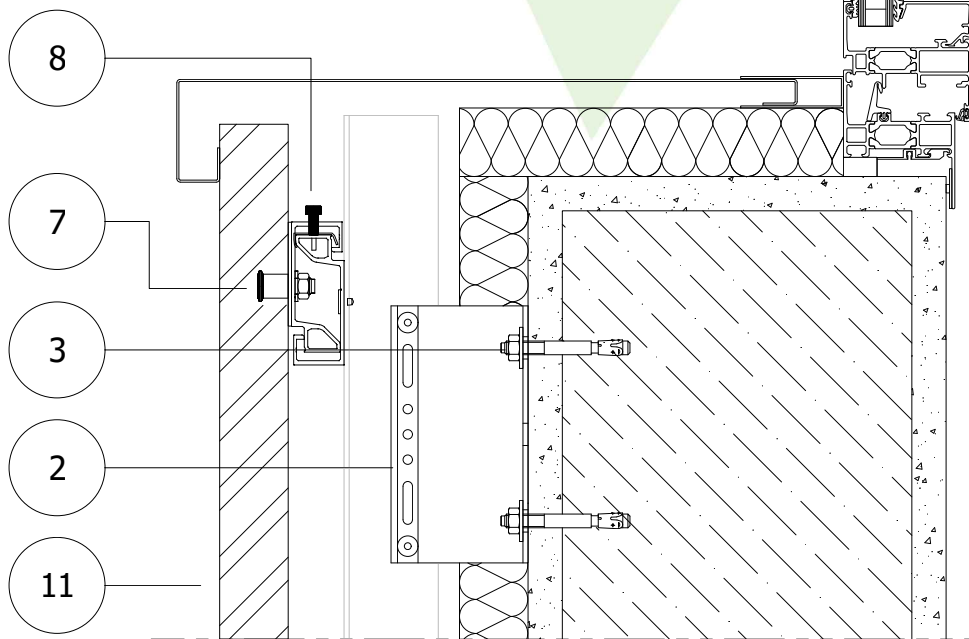


ALIVA[®]

**SISTEMI
PER FACCIATE**

LEGEND

- 1** BOX-SECTION MULLION
- 2** U BRACKET
- 3** WALL ANCHOR
- 4** TSV RIVET
- 5** ORAS GS PROFILE
- 6** FASTENER
- 7** TILE ANCHOR
- 8** ADJUSTABLE FASTENER
WITH LOCKING SYSTEM
- 9** ADJUSTABLE FASTENER
- 10** SHEET METAL
- 11** STONE TILE



ALI STONE 3

Window aluminium sill-ceiling vertical section

ALIVA[®] SISTEMI
PER FACCIATE