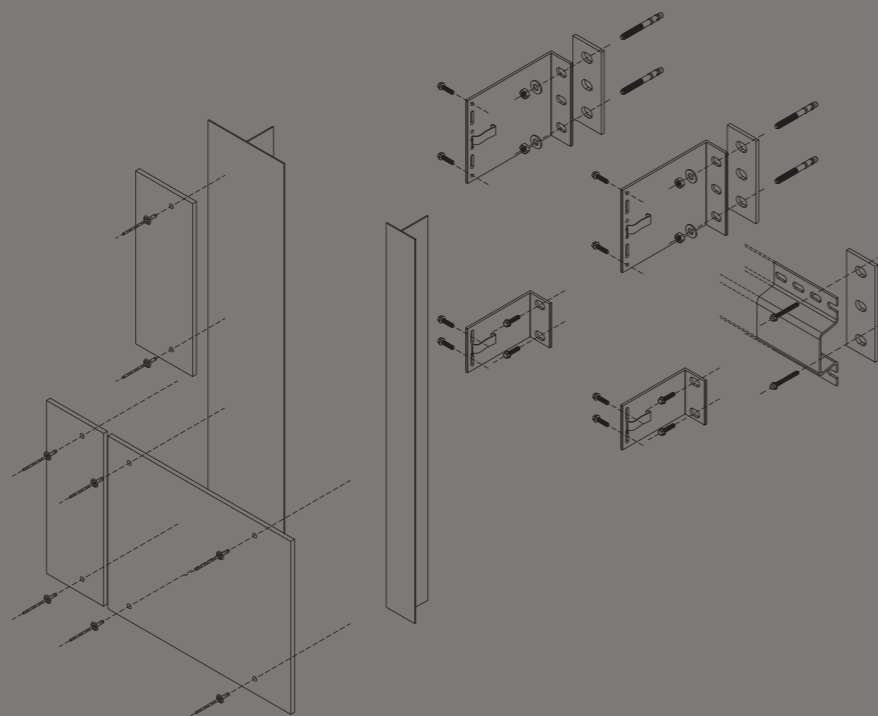
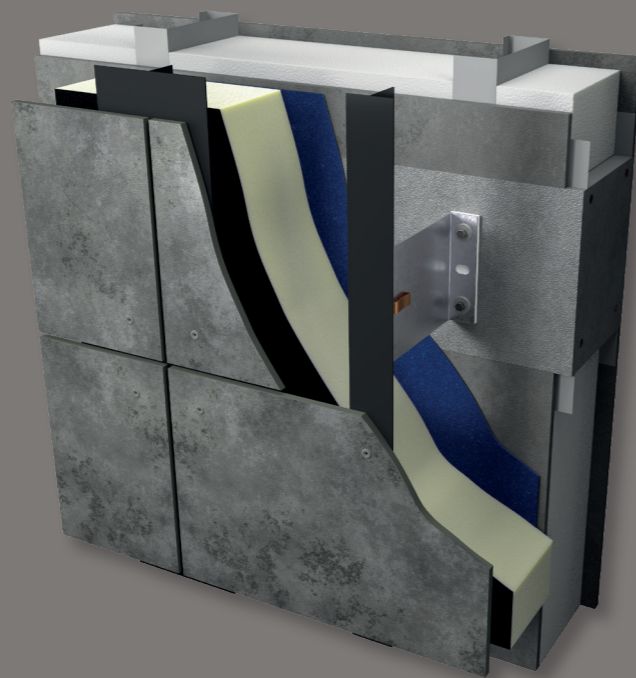
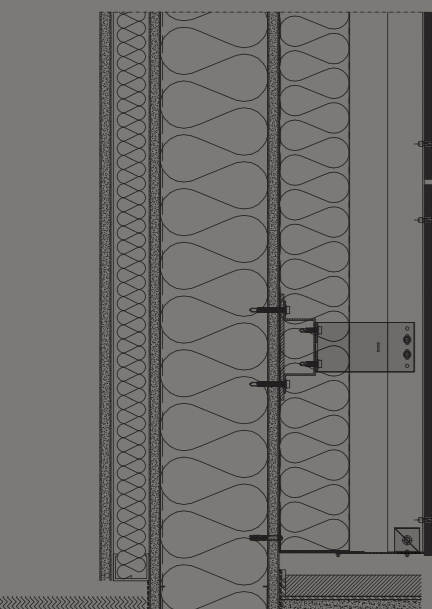
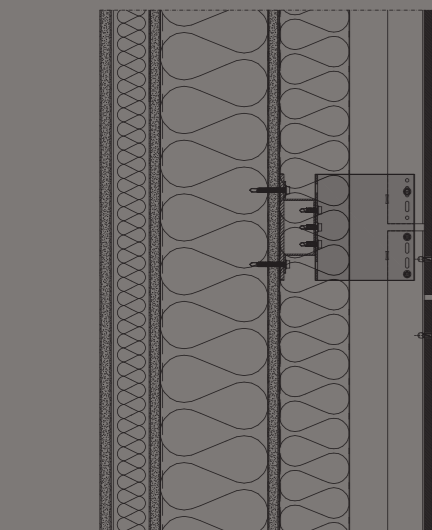
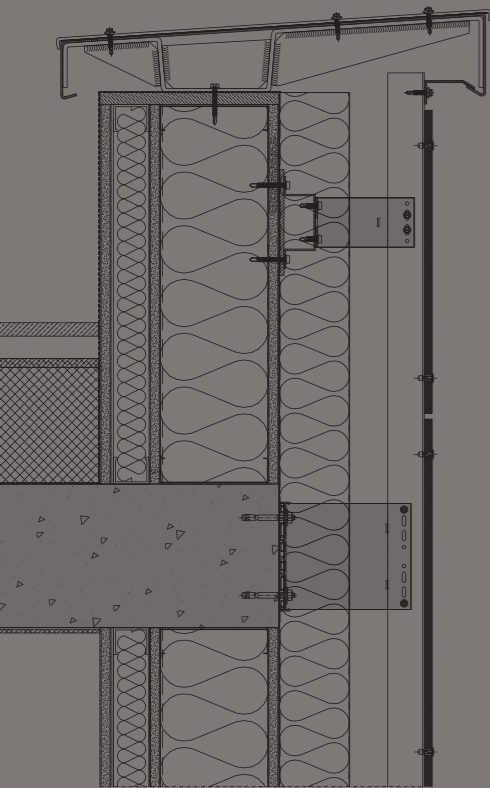


Large.covering

DATA SHEET



Technical information

Información técnica
Informazioni tecniche

Maximum panel dimensions

Tamaño máximo de los paneles
Dimensioni massime dei pannelli

Panel thickness

Espesor de los paneles
Spessore dei pannelli

Panel orientation

Orientación del panel
Orientamento del pannello

Material

Material
Materiale

Joint

Junta
Fuga

Fastening

Fijación
Fissaggio

Surfaces

Superficies
Superfici

Design life of the complete system

Vida de diseño del sistema completo
Design life del sistema completo

Surface burning characteristic

Reacción al fuego según la EN 13501-1
Reazione al fuoco secondo EN 13501-1

Surface burning characteristic
Phenolic

Weight of the system with substructure

Peso del sistema con subestructura
Peso sistema completo di sottostruttura

Large.covering

Fenolic: 81" by 110" nom.

Fibro: 48" by 121"
Fenolic: 2070x2800 mm
Fibro: 1220x3070mm

5/16" nom.

8 mm
8 mm

Horizontal or vertical

Horizontal o vertical
Orizzontale o verticale

Fenolic: Hpl / Fibro: Fibre cement

Fenolic: Hpl / Fibro: Fibrocemento
Fenolic: Hpl / Fibro: Fibrocemento

5/16" nom.

8 mm
8 mm

Visible

Visible
Visibile

Fenolic: Wood, stone, metal effect, solid colors, concrete / Fibro: Textured concrete effect.

Fenolic: Efecto madera, piedra, metal, color liso, cemento / Fibro: Efecto cemento matérico.
Fenolic: Effetto legno, pietra, metallo, tinte unita, cemento / Fibro: Effetto cemento materico.

> 30 years

> 30 años
> 30 anni

Phenolic: A Class

Fibro: A Class

ASTM E84-23b

A Class

3 lb/sf

16 kg/m2
16 kg/m2



Recyclability



Recycled content



Easy installation



Impact resistance



Chemicals resistance



Easy cleaning



Fire reaction



Resistance to atmospheric agents



Single panel replacement