

# METROPOLIS<sup>®</sup>

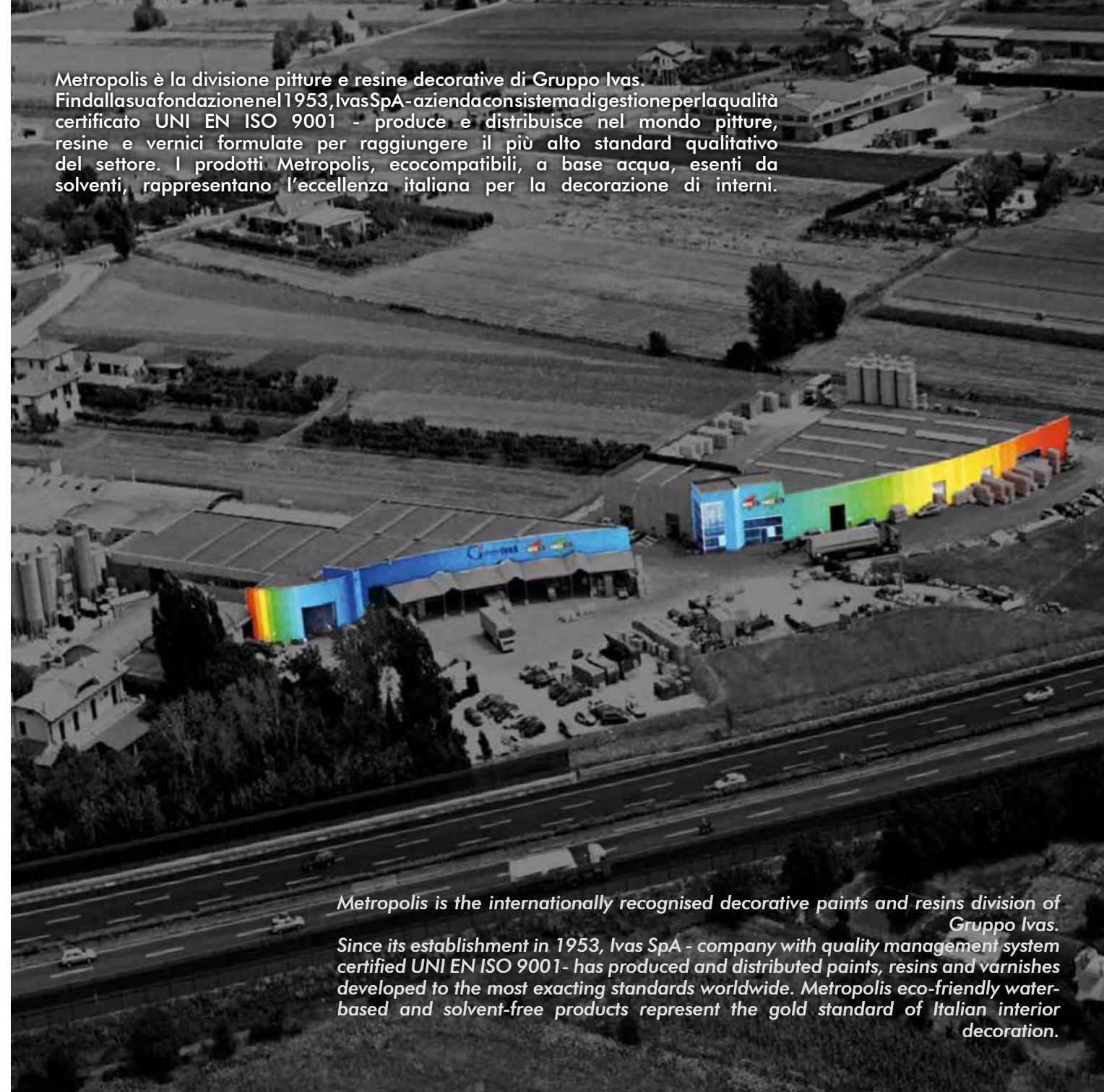
PAINTS FOR LIFESTYLE by IVAS



METROPOLIS®  
paints and resins are



Metropolis è la divisione pitture e resine decorative di Gruppo Ivas.  
Findalla sua fondazione nel 1953, Ivas SpA - azienda con sistema di gestione per la qualità certificato UNI EN ISO 9001 - produce e distribuisce nel mondo pitture, resine e vernici formulate per raggiungere il più alto standard qualitativo del settore. I prodotti Metropolis, ecocompatibili, a base acqua, esenti da solventi, rappresentano l'eccellenza italiana per la decorazione di interni.



*Metropolis is the internationally recognised decorative paints and resins division of Gruppo Ivas.*

*Since its establishment in 1953, Ivas SpA - company with quality management system certified UNI EN ISO 9001 - has produced and distributed paints, resins and varnishes developed to the most exacting standards worldwide. Metropolis eco-friendly water-based and solvent-free products represent the gold standard of Italian interior decoration.*



Prodotto / Product:  
Soul Cement - Soul Cement Ext  
Tecnica / Technique:  
Effetto cemento dilavato / Washed  
cement effect



## SOUL CEMENT

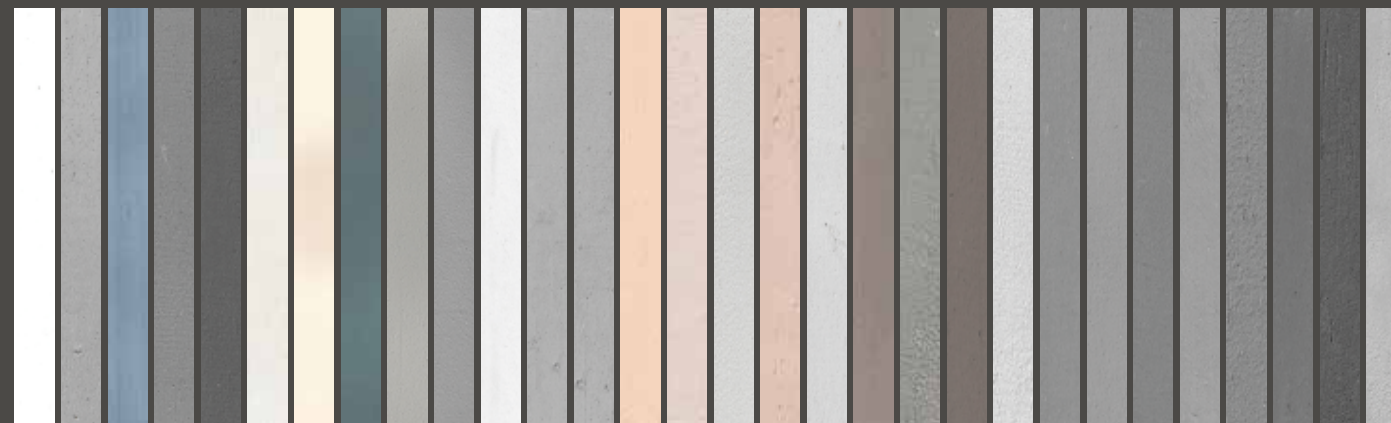
Stucco intonaco a finire ad effetto cemento dilavato, traspirante, satinato, all'acqua; a base di calce. Per interno ed esterno (Soul Cement Ext.)

Plaster finishing coat that creates the effect of washed cement, breathable, satin finish, water-based, lime-based. For interior and exterior use (Soul Cement Ext.)

## SOUL CEMENT

Anima di cemento

Colori / Colours:



SC 00 SC 01 SC 02 SC 03 SC 04 SC 05 SC 06 SC 07 SC 08 SC 08 SC 10 SC 11 SC 12 SC 13 SC 14 SC 15 SC 16 SC 17 SC 18 SC 19 SC 20 SC 21 SC 22 SC 23 SC 24 SC 25 SC 26 SC 27 SC 28 SC 29

Tecniche / Techniques:



SC 01 SC 02 SC 00 + Lady Vi LV 71 Effetto Blade Runner Blade Runner Effect SC 22 + Lady Vi LV 63 Effetto Blade Runner Blade Runner Effect

# COLORS

Stucchi decorativi  
Decorative plasters

Prodotto / Product:  
Venezia S

Tecnica / Technique:  
Effetto spatolato / Trowelled effect



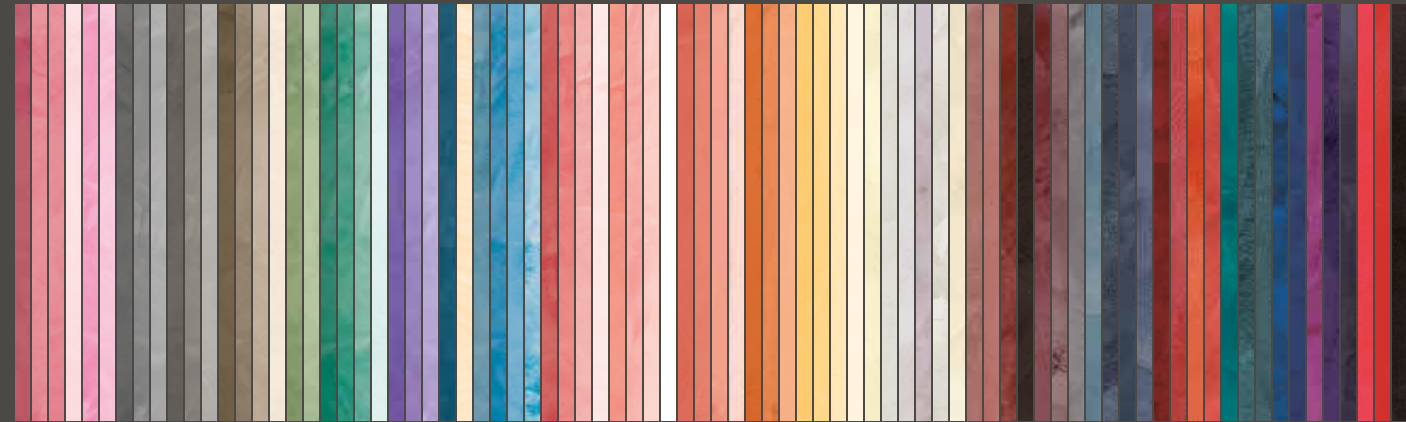
## VENEZIA S

Stucco veneziano, traspirante, lucido, all'acqua.  
Per interno.

Venetian stucco, breathable, glossy, water-based.  
For interior.

VENEZIA S  
Antico Nobile Stucco

Colori / Colours:



VE 01  
VE 02  
VE 03  
VE 05  
VE 06  
VE 07  
VE 09  
VE 10  
VE 11  
VE 13  
VE 14  
VE 15  
VE 17  
VE 18  
VE 19  
VE 20  
VE 22  
VE 23  
VE 25  
VE 26  
VE 27  
VE 28  
VE 29  
VE 30  
VE 31  
VE 33  
VE 34  
VE 35  
VE 37  
VE 38  
VE 39  
VE 41  
VE 42  
VE 43  
VE 44  
VE 45  
VE 46  
VE 47  
VE 48  
VE 49  
VE 50  
VE 51  
VE 52  
VE 53  
VE 54  
VE 55  
VE 57  
VE 58  
VE 59  
VE 60  
VE 62  
VE 63  
VE 64  
VE 67  
VE 68  
VE 69  
VE 71  
VE 72  
VE 73  
VE 74  
VE 75  
VE 76  
VE 77  
VE 78  
VE 79  
VE 80  
VE 81  
VE 82  
VE 83  
VE 84  
VE 85  
VE 86  
VE 87  
VE 88  
VE 89  
VE 90  
VE 92  
VE 93  
VE 94  
VE 97  
VE 98  
VE 99

Tecniche / Techniques:



VE 69  
Effetto Italian Classic / Italian Classic Effect



VE 18  
Effetto Single Layer Minimal / Single Layer Minimal Effect

Questa è una riproduzione fotografica, per una accurata presa visione delle tinte riferirsi alla cartella colore Venezia S.  
This is a photographic reproduction; for an accurate view of the colors please refer to the color card Venezia S.

Prodotto / Product:  
Canova  
Tecnica / Technique:  
Effetto spatolato / Trowelled effect



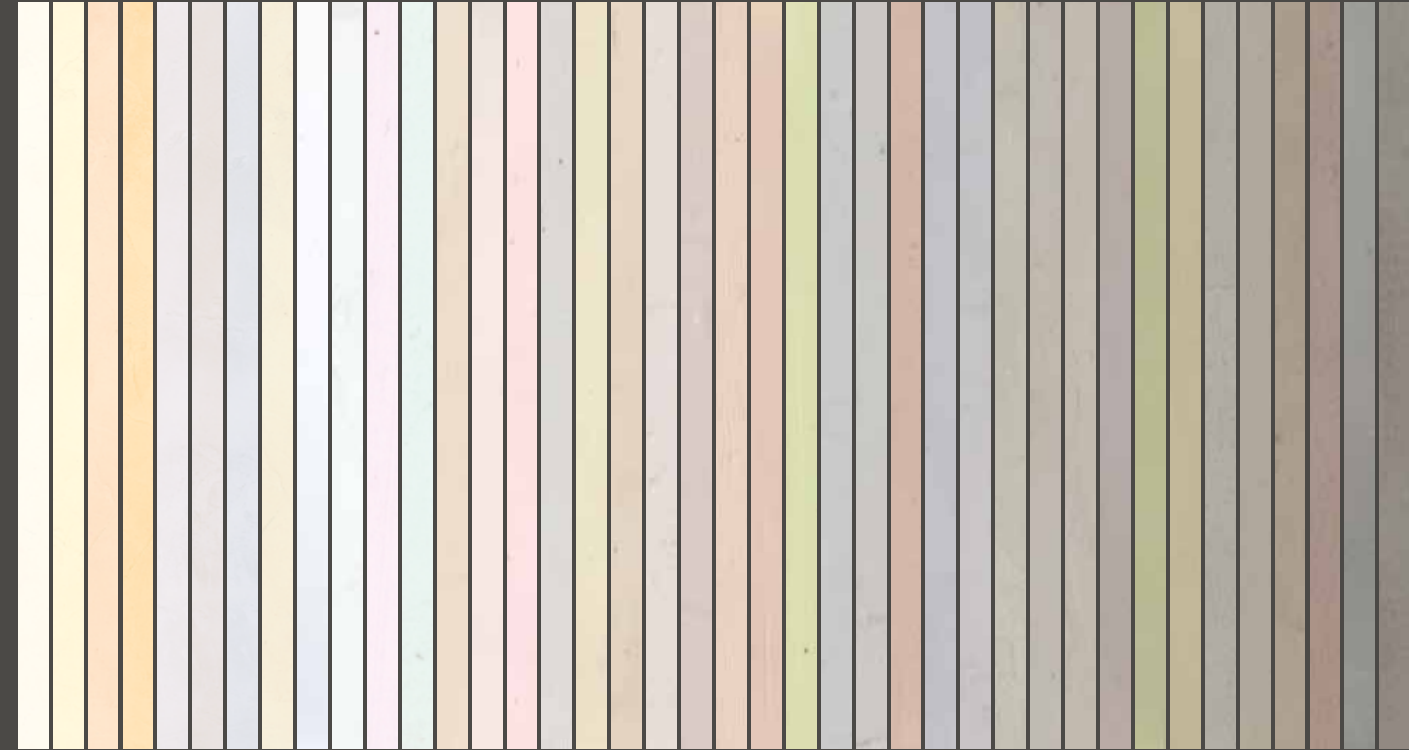
## CANOVA

Stucco a spessore extrafine ad effetto gesso neoclassico,  
morbido e setoso al tatto, opaco traspirante, all'acqua.  
Per interno.

Stucco with extra fine thickness creating a neoclassical gypsum  
effect, soft and silky feel, matt, breathable, water-based.  
For interior use.

CANOVA  
Antico gesso

Colori / Colours:



CA 01  
CA 02  
CA 03  
CA 04  
CA 05  
CA 06  
CA 07  
CA 08  
CA 09  
CA 10  
CA 11  
CA 12  
CA 13  
CA 14  
CA 15  
CA 16  
CA 17  
CA 18  
CA 19  
CA 20  
CA 21  
CA 22  
CA 23  
CA 24  
CA 25  
CA 26  
CA 27  
CA 28  
CA 29  
CA 30  
CA 31  
CA 32  
CA 33  
CA 34  
CA 35  
CA 36  
CA 37  
CA 38  
CA 39  
CA 40



Prodotto / Product:  
Concreto  
Tecnica / Technique:  
Effetto Striato / Streaked effect



## CONCRETO

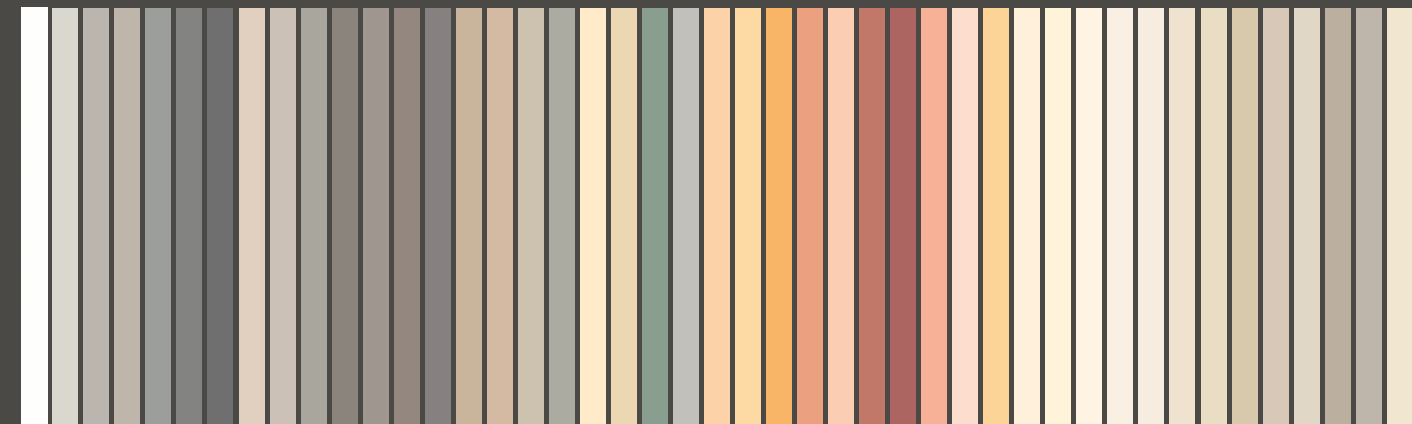
Rivestimento a spessore texturizzato a base di calce naturale per effetti lisci o materici. Ideale per ricreare i molteplici aspetti del cemento: spazzolato, armato, materico e striato. Per interno ed esterno.

*Continuous texturised natural lime based thick coat for a smooth or materic effect. Ideal to recreate the multiple aspects of the cement: brushed, reinforced, materic and streaked. For interior and exterior use.*

## CONCRETO

Cemento materico

Colori / Colours:



CO 00  
CO 01  
CO 02  
CO 03  
CO 04  
CO 06  
CO 07  
CO 08  
CO 09  
CO 10  
CO 11  
CO 12  
CO 13  
CO 14  
CO 16  
CO 18  
CO 19  
CO 20  
CO 24  
CO 26  
CO 27  
CO 29  
CO 32  
CO 33  
CO 35  
CO 36  
CO 37  
CO 38  
CO 39  
CO 40  
CO 41  
CO 42  
CO 50  
CO 51  
CO 52  
CO 53  
CO 54  
CO 55  
CO 56  
CO 57  
CO 58  
CO 59  
CO 60  
CO 61  
CO 62

Tecniche / Techniques:



CO 02  
Effetto Cemento spazzolato / Brushed cement Effect



CO 01  
Effetto Materico / Materic Effect



CO 04  
Effetto Striato / Streaked Effect



CO 05  
Effetto Armato / Reinforced Effect



Prodotto / Product:  
Old Time Max  
Tecnica / Technique:  
Effetto pietra naturale / Natural stone effect



## OLD TIMES

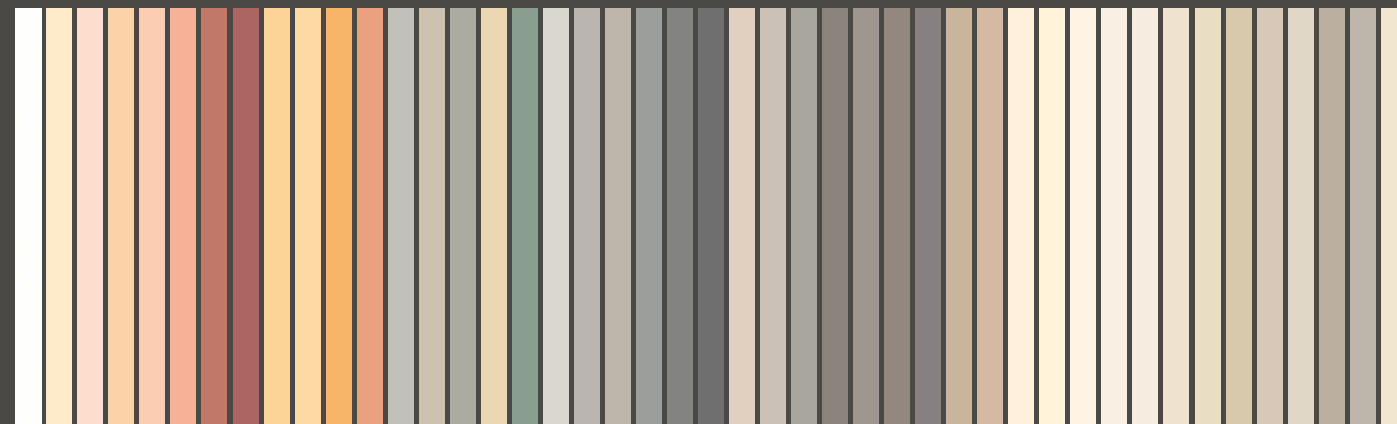
Linea di pitture, stucchi e intonaci minerali a base calce, traspiranti, ideali per effetti parete antica, pietra liscia e marmo lucido, all'acqua. Per interno ed esterno.

*Line of lime-based mineral paints, stuccoes and plasters, breathable and water-based. Ideal to create the antique, polished stones and glossy marble effects. For interior and exterior use.*

## OLD TIMES

I tempi antichi della calce

Colori / Colours:



OT 00 OT 02 OT 05 OT 06 OT 07 OT 08 OT 09 OT 10 OT 11 OT 12 OT 14 OT 15 OT 17 OT 18 OT 19 OT 25 OT 26 OT 31 OT 32 OT 33 OT 34 OT 36 OT 37 OT 38 OT 39 OT 40 OT 41 OT 42 OT 43 OT 44 OT 46 OT 48 OT 50 OT 51 OT 52 OT 53 OT 54 OT 55 OT 56 OT 57 OT 58 OT 59 OT 60 OT 61 OT 62

Prodotti e Tecniche / Products and Techniques:



Old Time OT 02  
Effetto Anticato / Antique Effect



Old Time Max OT 18  
Effetto Pietra Naturale / Natural Stone Effect



Old Time Max + Old Time Finish OT 62  
Effetto Marmorino / Marmorino Effect



Prodotto / Product:  
Materia Romana + Materia Romana  
Finitura  
Tecnica / Technique:  
Effetto Travertino / Travertino effect



## MATERIA ROMANA

Intonaco naturale a base calce e finitura semi-trasparente ideali per riprodurre il caratteristico effetto decorativo della roccia calcarea "travertino romano" ed esaltarne le sfumature cromatiche e le venature tipiche.  
Per interno ed esterno.

*A natural lime-based plaster and semi-transparent finish, ideal for reproducing the distinctive decorative finish of "Roman travertine" limestone and enhance its typical shades of colour and veining.  
For interior and exterior use.*

## MATERIA ROMANA

Travertino imperiale

Colori / Colours:



MA 01

MA 02

MA 03

MA 04

MA 05

MA 06

Tecniche / Techniques:



Materia Romana + Materia Romana Finitura MA 00

Materia Romana + Materia Romana Finitura MA 02  
Effetto fugato / Effect with joints

Materia Romana + Materia Romana Finitura MA 03  
Effetto travertino / Travertino effect

Questa è una riproduzione fotografica, per una accurata presa visione delle tinte riferirsi alla cartella colore Materia Naturale.  
This is a photographic reproduction; for an accurate view of the colors please refer to the color card Materia Naturale.



# COLORS

Iridescenti, metallici, perlescenti  
Iridescent, metallic and pearly

Prodotto / Product:  
Senso

Tecnica / Technique:  
Effetto Industrial / Industrial effect



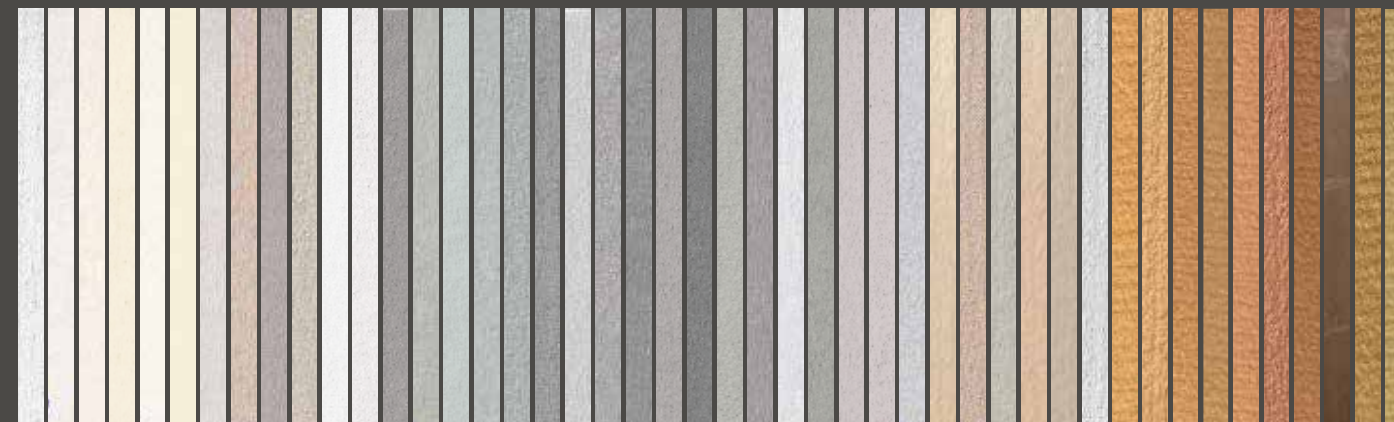
## SENZO

Finitura materica opaca ad effetto velluto, lievemente perlescente, all'acqua.  
Per interno.

*Matt, textured finish with a velvety, slightly pearly effect.  
Water-based.  
For interior use.*

SENZO  
Metallo materico

Colori / Colours:



SE Silver  
SE 01  
SE 02  
SE 03  
SE 04  
SE 05  
SE 06  
SE 07  
SE 08  
SE 09  
SE 10  
SE 11  
SE 12  
SE 13  
SE 14  
SE 15  
SE 17  
SE 18  
SE 19  
SE 20  
SE 21  
SE 22  
SE 23  
SE 24  
SE 25  
SE 26  
SE 27  
SE 28  
SE 29  
SE 30  
SE 31  
SE 32  
SE 33  
SE 34  
SE 35  
SE 36  
SE Gold  
SE 40  
SE 41  
SE 42  
SE 43  
SE 44  
SE 45  
SE 46  
SE 47  
SE 48

Tecniche / Techniques:



SE 12  
Effetto Industrial / Industrial Effect



SE 18  
Effetto Steel / Steel Effect



SE 03  
Effetto Textile / Textile Effect



SE 09  
Effetto Juta Wallpaper / Juta  
Wallpaper Effect



SE 46  
Effetto Leaf / Suede Effect

# COLORS

Iridescenti, metallici, perlescenti  
Iridescent, metallic and pearly

Prodotto / Product: Laminax  
Tecnica / Technique: Effetto Inox / Inox effect



## LAMINAX

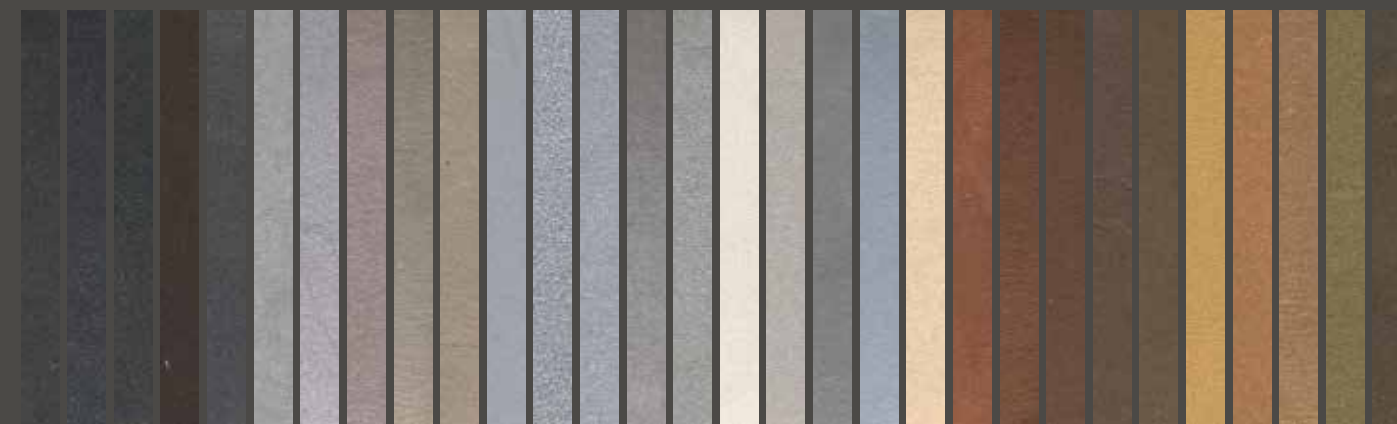
Stucco multicolore per effetto lamina metallica e sue ossidazioni, all'acqua.  
Per Interno.

*Metalized plaster plaster skim coat, water-based, metallic foil polished, etched, oxidized effect.  
For interior use.*

## LAMINAX

Stucco metallico

Colori / Colours:



LX Black Base  
LX 01  
LX 02  
LX 03  
LX 04  
LX Aluminum Base  
LX 05  
LX 06  
LX 07  
LX 08  
LX 09  
LX 10  
LX 11  
LX 12  
LX 13  
LX Silver Base  
LX 14  
LX 15  
LX 16  
LX 17  
LX Copper Base  
LX 18  
LX 19  
LX 20  
LX 21  
LX Gold Base  
LX 22  
LX 23  
LX 24  
LX 25

Tecniche / Techniques:



LX ALUMINUM Base  
Effetto Inox / Inox Effect



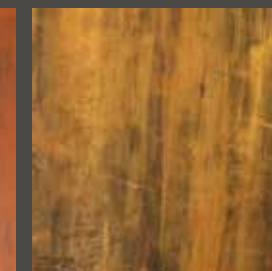
LX COPPER Base + LX ALUMINUM Base  
Effetto Century Acidato / Century Etched Effect



LX ALUMINUM Base + LX BLACK Base  
Effetto Garage / Garage Effect



LX BLACK Base + LX COPPER Base  
Effetto Century Ossidato / Century Oxidized Effect



LX COPPER Base + LX GOLD Base  
Effetto Century Ossidato / Century Oxidized Effect

# COLORS

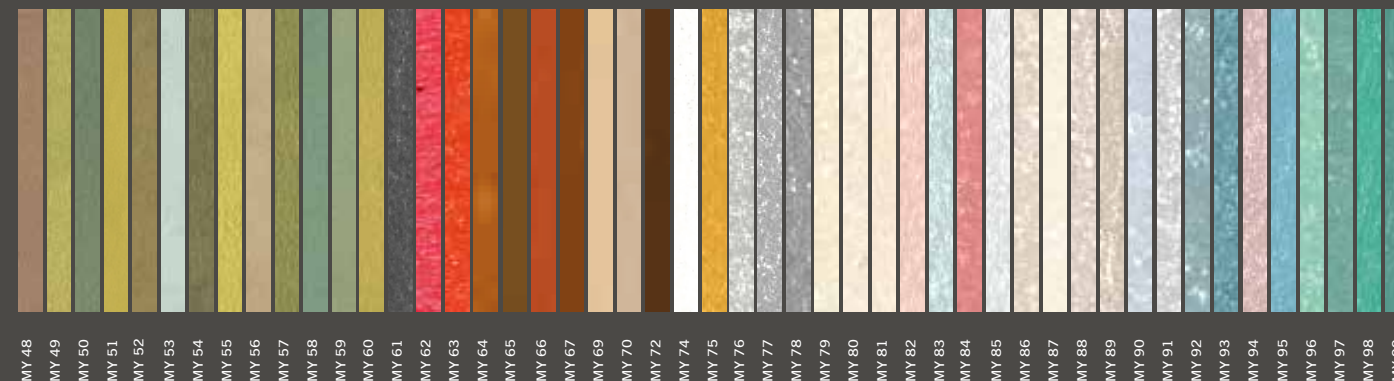
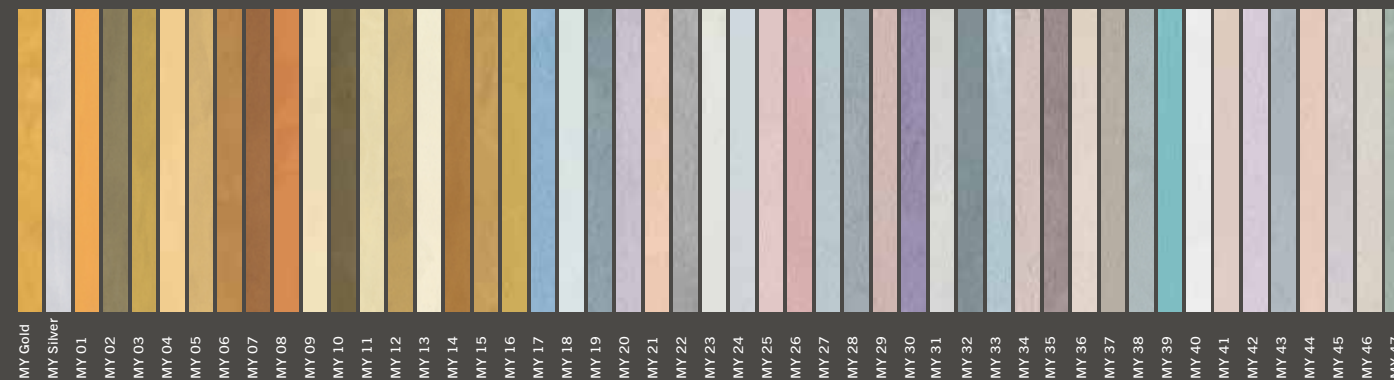
Iridescenti, metallici, perlescenti  
Iridescent, metallic and pearly

Prodotto / Product: Money  
Tecnica / Technique: Effetto Soft / Soft effect

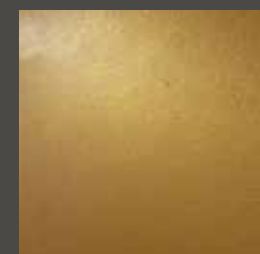


MONEY  
Luce Preziosa

Colori / Colours:



Tecniche / Techniques:



Money MY GOLD Base  
Effetto Soft / Soft Effect



Money MY 37  
Effetto Washed/ Washed Effect

## MONEY

Finitura a base di resine, extender e glitter metallizzati, studiato per aumentare i cromatismi dell'oro e dell'argento e per conferire maggiore iridescenza e brillantezza. Per interno.

Topcoat layer containing resins, extenders and metallic glitter, designed to enhance the gold and silver chromatisms with greater iridescence and brightness. For interior use.

Questa è una riproduzione fotografica, per una accurata presa visione delle tinte riferirsi alla cartella colore Money-Mida-Mito.  
This is a photographic reproduction; for an accurate view of the colors please refer to the color card Money-Mida-Mito.

# COLORS

Iridescenti, metallici, perlescenti  
Iridescent, metallic and pearly

Prodotto / Product: Mida  
Tecnica / Technique: Effetto Classico / Classic effect



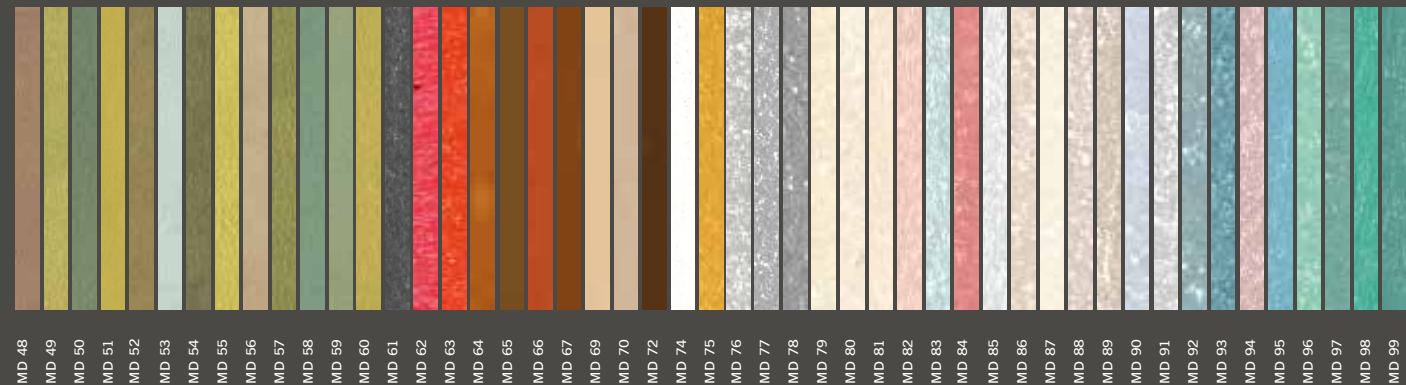
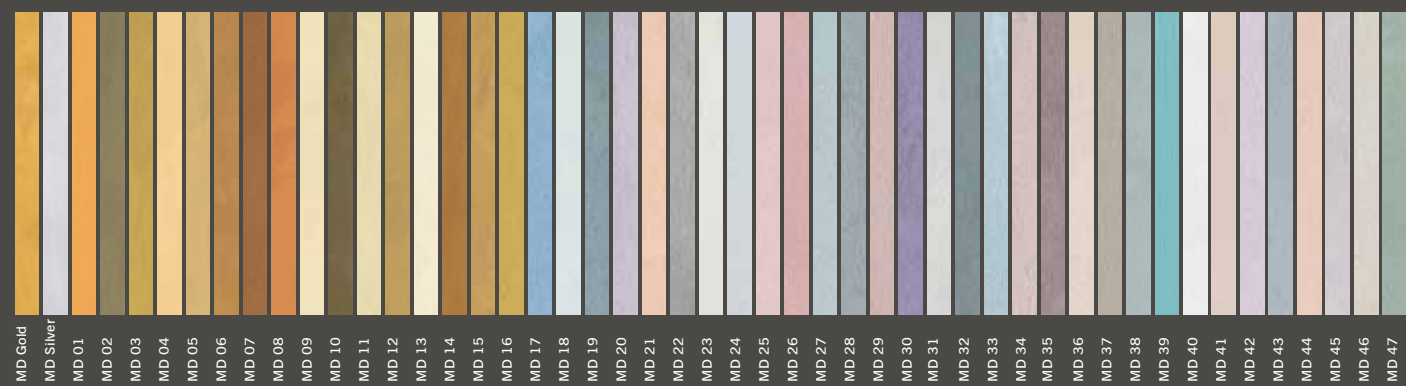
## MIDA

Finitura lavabile vellutata ad effetto multicromatico, estremamente resistente al graffio, metallizzata, all'acqua. Per interno.

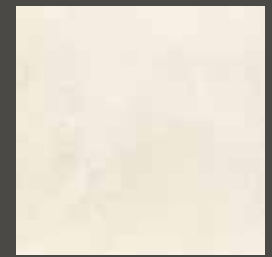
*Velvety multi-coloured effect finishing coat, water-based, metallic, extremely scratch resistant and washable. For interior use.*

MIDA  
Il tocco del Re

Colori / Colours:



Tecniche / Techniques:



Money MY SILVER Base + MD SILVER Base  
Effetto Classico / Classic Effect



Money MD GOLD Base + Hot Metal HM 02  
Effetto Brown Sugar / Brown Sugar Effect

Questa è una riproduzione fotografica, per una accurata presa visione delle tinte riferirsi alla cartella colore Money-Mida-Mito.  
This is a photographic reproduction; for an accurate view of the colors please refer to the color card Money-Mida-Mito.

Prodotto / Product: Mito  
Tecnica / Technique: Effetto Texture / Texture effect

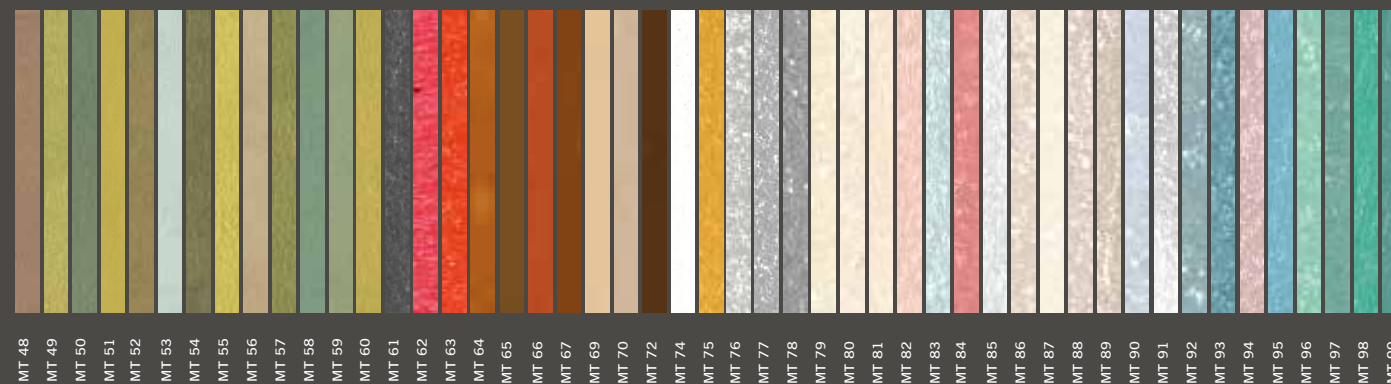
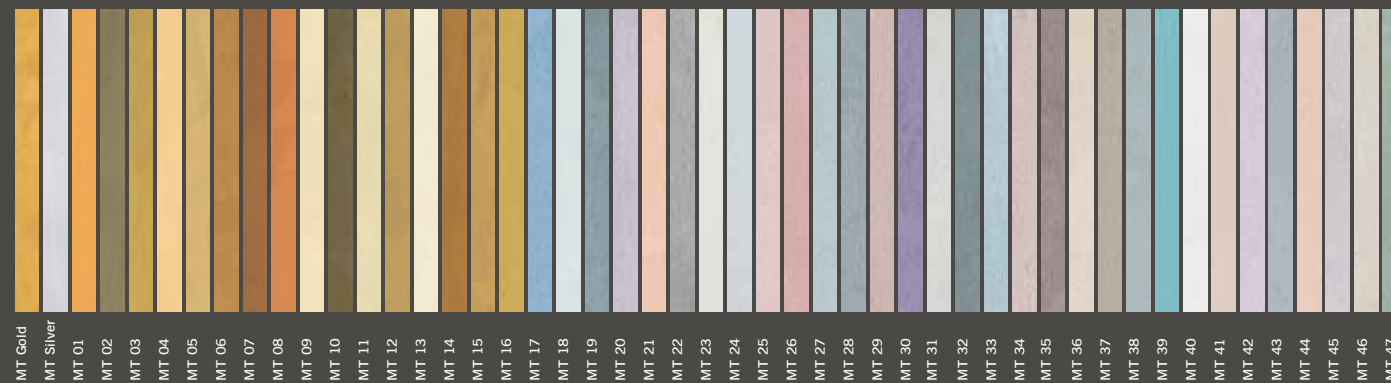


# MITO

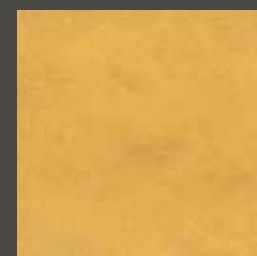
Finitura lavabile materica ad effetto multicromatico, metallizzata, all'acqua.  
Per interno.

*Textural multi-coloured effect finishing coat, water-based, metallic and washable.  
For interior use.*

Colori / Colours:



Tecniche / Techniques:



Money MY GOLD Base + MT GOLD Base  
Effetto Soft / Soft Effect



Money MY 61 + MT 61  
Effetto Texture / Texture Effect

Questa è una riproduzione fotografica, per una accurata presa visione delle tinte riferirsi alla cartella colore Money-Mida-Mito.  
This is a photographic reproduction; for an accurate view of the colors please refer to the color card Money-Mida-Mito.

# COLORS

Iridescenti, metallici, perlescenti  
Iridescent, metallic and pearly

Prodotto / Product: Fato  
Tecnica / Technique: Effetto Brush / Brush effect



## FATO

Finitura multicromatica all'acqua, a rilievo, metallizzata, lavabile.  
Per interno.

Multi-coloured finishing coat, water-based, washable, metallic, embossed.  
For interior use.

FATO  
Polvere di luce

Colori / Colours:



FA 01 FA 02 FA 03 FA 04 FA 05 FA 06 FA 07 FA 08 FA 09 FA 10 FA 11 FA 12 FA 13 FA 14 FA 15 FA 16 FA 17 FA 18 FA 19 FA 21 FA 22 FA 23 FA 24 FA 25 FA 26 FA 27 FA 28 FA 29 FA 30 FA 31  
FP 32 FA 32 FP 33 FA 33 FP 34 FA 34 FP 35 FA 35 FP 36 FA 36 FP 37 FA 37 FP 38 FA 38 FP 39 FA 39 FP 40 FA 40 FP 41 FA 41 FP 42 FA 42 FP 43 FA 43 FP 44 FA 44 FP 45 FA 45 FP 46 FA 46 FP 47 FA 47 FP 48 FA 48 FP 49 FA 49 FP 50 FA 50 FP 51 FA 51 FP 52 FA 52 FP 53 FA 53 FP 54 FA 54 FP 55 FA 55 FP 56 FA 56 FP 57 FA 57 FP 58 FA 58 FP 59 FA 59 FP 60 FA 60 FP 61 FA 61 FP 62 FA 62 FP 63 FA 63 FP 64 FA 64 FP 65 FA 65 FP 66 FA 66 FP 67 FA 67 FP 68 FA 68 FP 69 FA 69 FP 70 FA 70 FP 71 FA 71 FP 72 FA 72 FP 73 FA 73 FP 74 FA 74 FP 75

Basi e Tecniche / Bases and Techniques:



FP PLATINUM BASE  
Effetto Scratched/Scratched Effect

FA GOLD BASE  
Effetto Brush / Brush Effect

FA COPPER BASE  
Effetto Brush / Brush Effect

FA SUGAR BASE  
Effetto Brush / Brush Effect

FA SILVER BASE  
Effetto Brush / Brush Effect

FA RED BASE  
Effetto Brush / Brush Effect

Con FATO Base Silver e Base Platinum è possibile realizzare anche tutte le tinte della mazzetta "IPi - Selezione Interni"  
With Fato Silver Base e Fato Platinum Base is possible to obtain also all the tints "IPi - Selezione Interni (Interior Selection)" tints

Questa è una riproduzione fotografica, per una accurata presa visione delle tinte riferirsi alla cartella colore Fato.  
This is a photographic reproduction; for an accurate view of the colors please refer to the color card Fato.

Prodotto / Product:  
Lady Vi

Tecnica / Technique:  
Effetto Madame / Madame effect



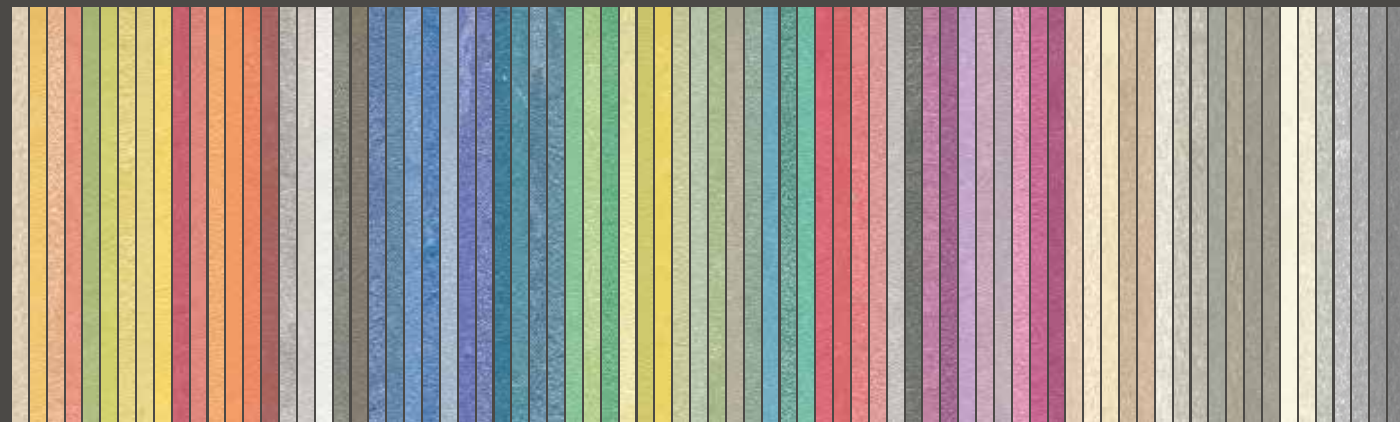
## LADY VÍ

Finitura lavabile ad effetto vellutato, cangiante, all'acqua.  
Per interno.

Water-based washable coating with velvety, iridescent finish.  
For interior use.

LADY VÍ  
Soffice Velluto

Colori / Colours:



LV 20  
LV 21  
LV 22  
LV 23  
LV 24  
LV 25  
LV 26  
LV 27  
LV 28  
LV 29  
LV 30  
LV 31  
LV 32  
LV 33  
LV 34  
LV 35  
LV 36  
LV 37  
LV 38  
LV 39  
LV 40  
LV 41  
LV 42  
LV 43  
LV 44  
LV 45  
LV 46  
LV 47  
LV 48  
LV 49  
LV 50  
LV 51  
LV 53  
LV 54  
LV 56  
LV 57  
LV 58  
LV 59  
LV 60  
LV 61  
LV 62  
LV 63  
LV 64  
LV 65  
LV 66  
LV 67  
LV 68  
LV 69  
LV 70  
LV 71  
LV 72  
LV 73  
LV 74  
LV 75  
LV 76  
LV 77  
LV 78  
LV 79  
LV 80  
LV 81  
LV 82  
LV 83  
LV 84  
LV 85  
LV 86  
LV 87  
LV 88  
LV 89  
LV 90  
LV 91  
LV 92  
LV 93  
LV 94  
LV 95  
LV 96  
LV 97  
LV 98  
LV 99

Tecniche / Techniques:



LV 39  
Effetto Classic / Classic Effect



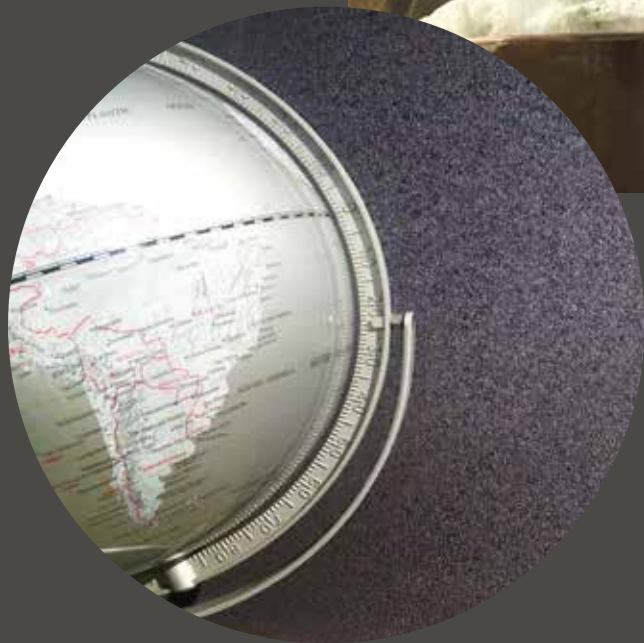
LV 91 + LV 62  
Effetto Materik / Materik Effect



LV 72  
Effetto Madame / Madame Effect

Questa è una riproduzione fotografica, per una accurata presa visione delle tinte riferirsi alla cartella colore Lady Vi.  
This is a photographic reproduction; for an accurate view of the colors please refer to the color card Lady Vi.

Prodotto / Product: Hot Metal  
Tecnica / Technique: Effetto Corten / Corten effect



## HOT METAL

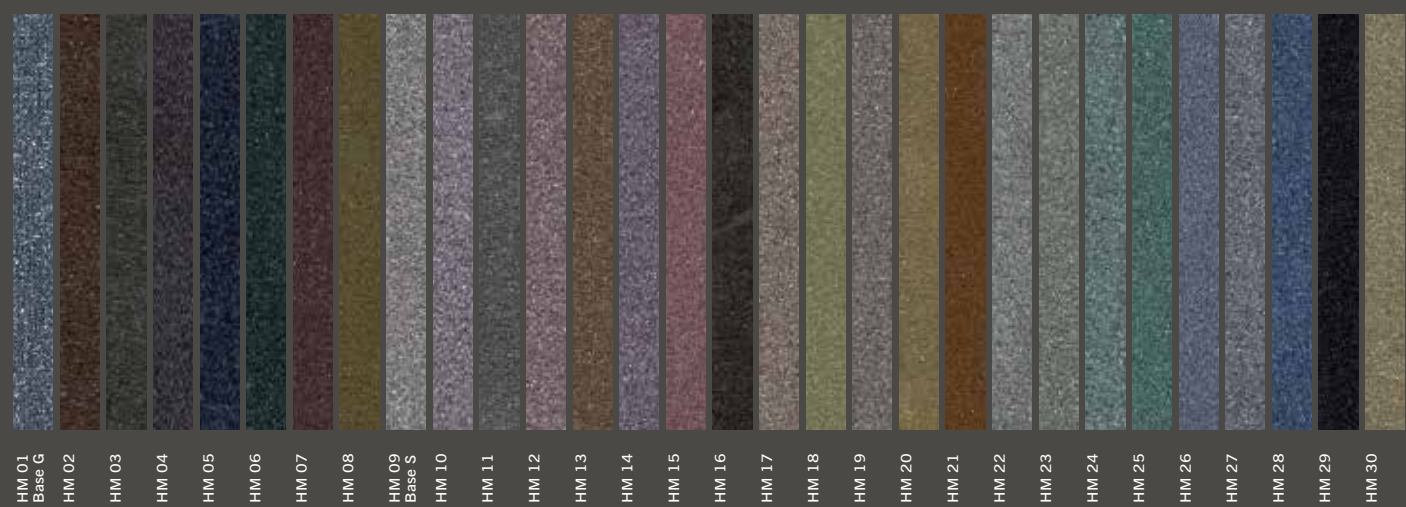
Finitura lavabile micacea ad effetto metallico, brillante alla luce, all'acqua.  
Per interno ed esterno.

Washable micaceous metallic effect finishing coat, glistens in the light, water-based.  
For interior or exterior use.

## HOT METAL

Spirito d'acciaio

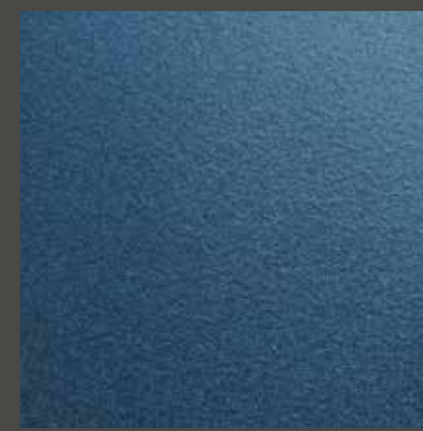
Colori / Colours:



Prodotti e Tecniche / Products and Techniques:



HM 02  
Effetto Velato / Veiled Effect



HM 05  
Effetto Pieno / Full Effect



HM 02 + HM 01 + Glam GL 03  
Effetto Corten / Corten Effect

Questa è una riproduzione fotografica, per una accurata presa visione delle tinte riferirsi alla cartella colore Hot Metal.  
This is a photographic reproduction; for an accurate view of the colors please refer to the color card Hot Metal.



# COLORS

Iridescenti, metallici, perlescenti  
Iridescent, metallic and pearly

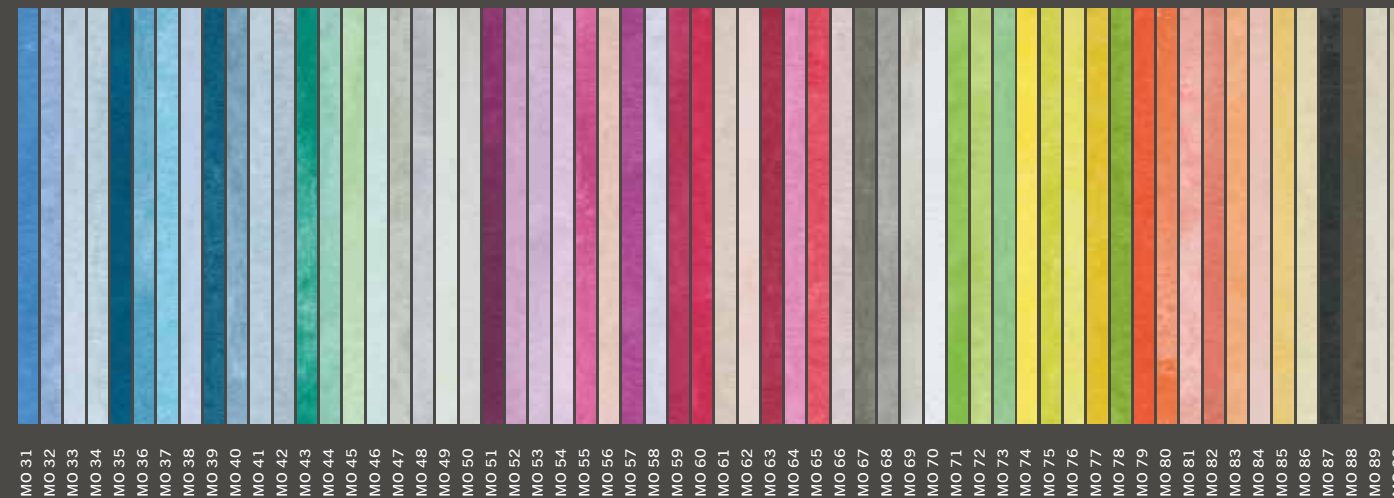
Prodotto / Product: Moon  
Tecnica / Technique: Effetto Skin / Skin effect



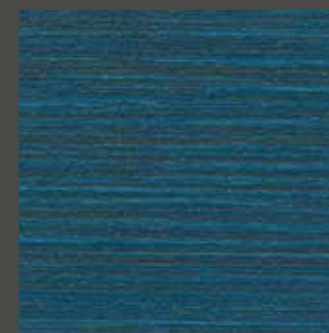
## MOON

Perle Lunari

Colori / Colours:



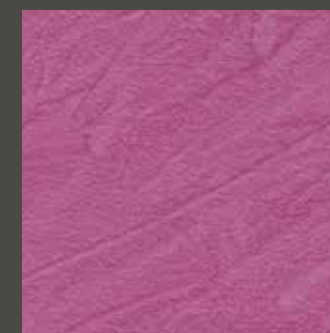
Prodotti e Tecniche / Products and Techniques:



Fondo Lavabile Acqua.Pura 025 + MO 35  
Washable coat Acqua.Pura 025 + MO 35  
Effetto Matrix / Matrix Effect



Fondo Lavabile Acqua.Divina bianco + MO 68  
Washable coat Acqua.Divina white + MO 68  
Effetto Skin / Skin Effect



Fondo Lavabile Acqua.Divina IP 432 + MO 55  
Washable coat Acqua.Divina IP 432 + MO 55  
Effetto Oblique / Oblique Effect



Fondo Lavabile Acqua.Divina bianco + MO 68  
Washable coat Acqua.Divina white + MO 68  
Effetto Spatolato / Trowelled Effect

## MOON

Finitura lavabile ad effetto perlescente, semilucida, all'acqua.  
Per interno.

Washable pearly semigloss finishing coat, water-based.  
For interior use.

Questa è una riproduzione fotografica, per una accurata presa visione delle tinte riferirsi alla cartella colore Moon.  
This is a photographic reproduction; for an accurate view of the colors please refer to the color card Moon.



Prodotto / Product:  
 Metropolis Factor  
 Tecnica / Technique:  
 Effetto Vena Naturale / Vena Naturale  
 effect



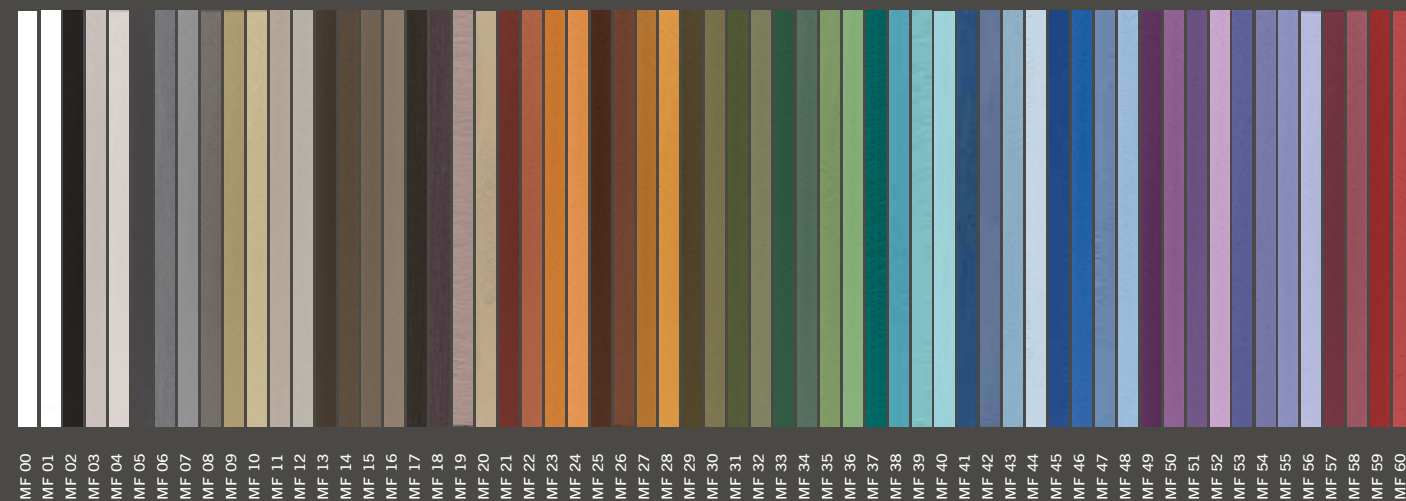
**METROPOLIS FACTOR**

Rivestimento riempitivo acril-silossanico a spessore per finiture materiche; traspirante, idrorepellente, flessibile, all'acqua.  
 Per interno ed esterno.

*Textured acrylic-siloxane filling finishing coat, breathable, water repellent, flexible, water-based.  
 For interior and exterior use.*

**METROPOLIS FACTOR**  
 Materia creativa

Colori / Colours:



Prodotti e Tecniche / Products and Techniques:



MF 18 Metropolis Factor  
 Effetto Materico / Materic Effect



MF 04 Metropolis Factor Fine  
 Effetto a Pois / Pois Effect



MF 02 Metropolis Factor + Metal Light  
 Effetto Las Vegas / Las Vegas Effect



MF 07 Metropolis Factor  
 Effetto Cemento / Cement Effect

Prodotto / Product:  
 Metro Materik  
 Tecnica / Technique:  
 Effetto pennello / Brush effect



## METRO MATERIK

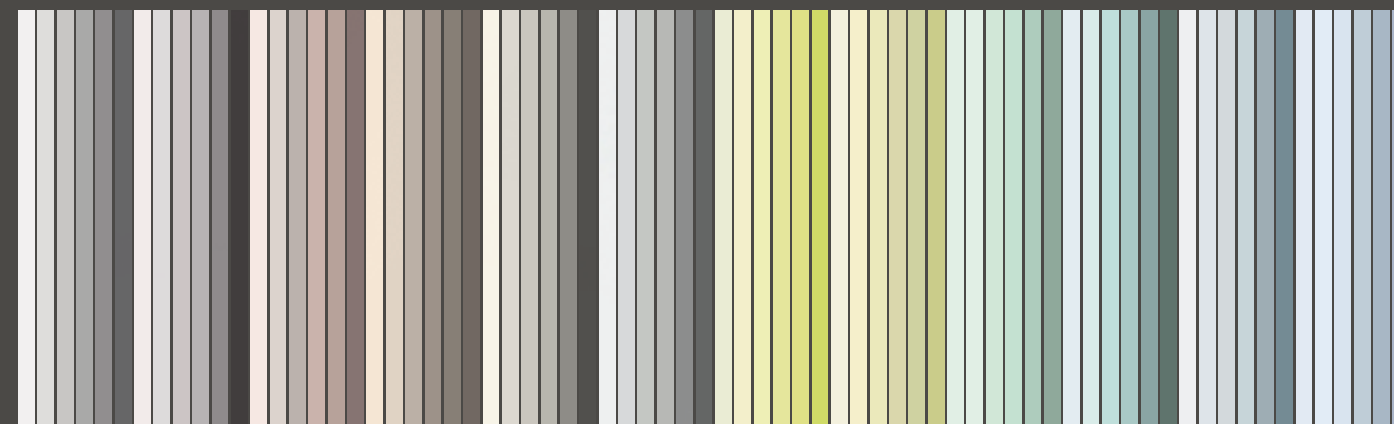
Finitura decorativa in rilievo, lavabile, traspirante, ad altissima resistenza all'abrasione, disponibile in oltre 3.700 tinte.  
 Per interno ed esterno.

*A decorative embossed finish that is washable, breathable, highly resistant to abrasion and available in over 3,700 colours.  
 For interior and exterior use.*

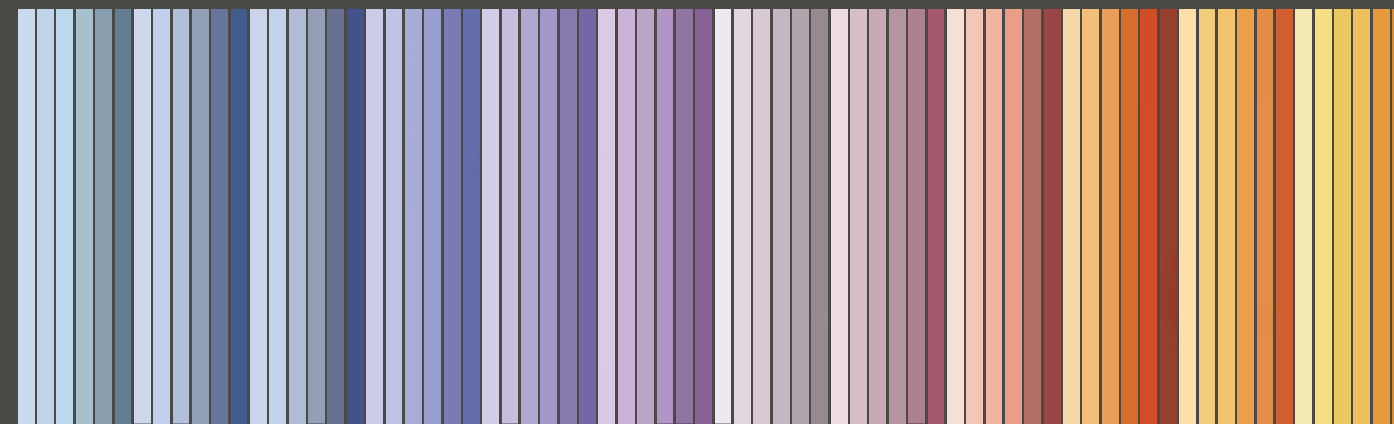
# METRO MATERIK

Soffio di materia

Colori / Colours:



IT 001 IT 002 IT 003 IT 004 IT 005 IT 006 IT 007 IT 008 IT 009 IT 010 IT 011 IT 012 IT 013 IT 014 IT 015 IT 016 IT 017 IT 018 IT 019 IT 020 IT 021 IT 022 IT 023 IT 024 IT 025 IT 026 IT 027 IT 028 IT 029 IT 030 IT 031 IT 032 IT 033 IT 034 IT 035 IT 036 IT 037 IT 038 IT 039 IT 040 IT 041 IT 042 IT 043 IT 044 IT 045 IT 046 IT 047 IT 048 IT 049 IT 050 IT 051 IT 052 IT 053 IT 054 IT 055 IT 056 IT 057 IT 058 IT 059 IT 060 IT 061 IT 062 IT 063 IT 064 IT 065 IT 066 IT 067 IT 068 IT 069 IT 070 IT 071 IT 072



IT 073 IT 074 IT 075 IT 076 IT 077 IT 078 IT 079 IT 080 IT 081 IT 082 IT 083 IT 084 IT 085 IT 086 IT 087 IT 088 IT 089 IT 090 IT 091 IT 092 IT 093 IT 094 IT 095 IT 096 IT 097 IT 098 IT 099 IT 100 IT 101 IT 102 IT 103 IT 104 IT 105 IT 106 IT 107 IT 108 IT 109 IT 110 IT 111 IT 112 IT 113 IT 114 IT 115 IT 116 IT 117 IT 118 IT 119 IT 120 IT 121 IT 122 IT 123 IT 124 IT 125 IT 126 IT 127 IT 128 IT 129 IT 130 IT 131 IT 132 IT 133 IT 134 IT 135 IT 136 IT 137 IT 138 IT 139 IT 140 IT 141 IT 142 IT 143 IT 144

Questa è una riproduzione fotografica, per una accurata presa visione delle tinte riferirsi alla cartella colore "Interior Trends", "Kappa - Selezione Esterni", "IPi - Selezione Interni", "Selezione Smalti (sezione: Ral Classic K7)", "RAL Design" e "NCS - Index 1950".  
 This is a photographic reproduction; for an accurate view of the colors please refer to the color card "Interior Trends", "Kappa - Selezione Esterni (Exterior Selection)", "IPi - Selezione Interni (Interior Selection)", "Selezione Smalti (section: Ral Classic K7)", "RAL Design" and "NCS - Index 1950" colour charts.

Prodotto / Product: Glam  
 Tecnica / Technique: Effetto quantato / Gloved effect



Colori / Colours:



Glam

GL 01  
 GL 02  
 GL 03



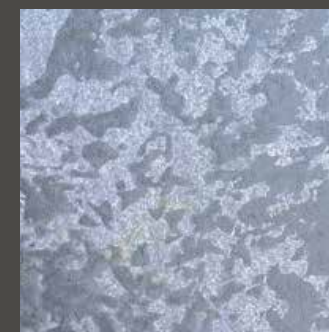
Harmony

V 31 V 32 V 33 V 34 V 35 V 36 V 37 V 38 V 39 V 40 V 41 V 42 V 43 V 44 V 45 V 46 V 47 V 48 V 49 V 50 V 51 V 52 V 53 V 54 V 55 V 56 V 57 V 58 V 59 V 60 V 61 V 62 V 63 V 64 V 65 V 66 V 67 V 68 V 69 V 70

Tecniche / Techniques:



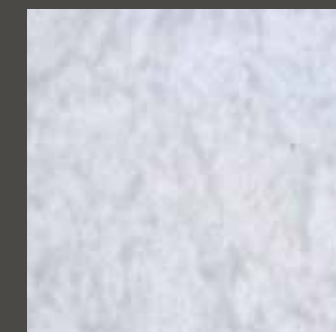
V 51  
 Effetto Pennellato / Brushed Effect



V 51  
 Effetto Spugnato / Sponged Effect



V 51  
 Effetto Quantato / Gloved Effect



V 51  
 Effetto Tamponato / Padded Effect

## GLAM

Finitura lavabile metallizzata a effetto velato, traspirante, all'acqua. Per interno.

*Washable metallic finishing coat with a hazy effect, breathable, water-based. For interior use.*

## HARMONY

Finitura acril-silossanica a effetto velato, traspirante, ideale per edifici di interesse storico, all'acqua. Per interno ed esterno

*Acrylic-siloxan finishing coat with a hazy effect, breathable, ideal for historic buildings, water-based. For interior and exterior use.*

## BRONX

Rivestimento materico acril-silossanico a spessore, idrorepellente, finito con pitture decorative traspiranti, lavabili, all'acqua. Per interno.

*Thick acrylic-siloxane textured coating, water repellent, finished with decorative breathable, washable, water-based paints. For interior use.*



**Prodotti / Products:**  
Metropolis Factor + Soul Cement  
**Tecnica / Technique:**  
Bronx 1

Ruvido, violento, pericoloso, puro: **Bronx** è il "ghetto" per eccellenza, il luogo in cui la cruda realtà incontra l'epica. L'effetto Bronx ricrea il fascino della periferia e la ruvidezza dei suoi vicoli malconci, trasformando ogni parete in una scenografia di Scorsese.

*Rough, violent, dangerous, pure: the **Bronx** is the original ghetto. It is where the crude facts meet the epic. The Bronx effect recreates the fascination of the suburbs and the ruggedness of its battered streets, transforming every wall into a Scorsese's scenery.*



**Prodotti / Products:**  
Metropolis Factor + Poster + Soul Cement  
**Tecnica / Technique:**  
Bronx 2

Tecniche e Colori / Techniques and Colours:

BRONX 1



MF 02 + SC 01 MF 02 + SC 02 MF 02 + SC 03 MF 02 + SC 04 MF 02 + SC 05 MF 02 + SC 06 MF 02 + SC 07 MF 02 + SC 08

BRONX 2



MF 01 + SC 01 MF 01 + SC 02 MF 01 + SC 03 MF 01 + SC 04 MF 01 + SC 05 MF 01 + SC 06 MF 01 + SC 07 MF 01 + SC 08

## BROOKLYN

Rivestimento materico acril-silossanico a spessore, idrorepellente, finito con pitture decorative traspiranti, lavabili, all'acqua. Per interno ed esterno.

*Thick acrylic-siloxane textured coating, water repellent, finished with decorative breathable, washable, water-based paints. For interior and exterior use.*



**Prodotti / Products:**  
Metropolis Factor + Hot Metal  
**Tecnica / Technique:**  
Brooklyn 1

Bar clandestini, proibizionismo, ruggine, Seconda Rivoluzione Industriale: **Brooklyn** è simbolo di un'epoca e di un ponte che unisce due mondi e due secoli differenti. L'effetto Brooklyn imprigiona per sempre colori, rumori e materie ricreando l'atmosfera proibita di un luogo e di un tempo leggendari.

*Illegal bars, prohibitionism, rust, the Second Industrial Revolution: **Brooklyn** symbolizes an era and its famous bridge unites two different worlds and two different centuries. The Brooklyn effect permanently imprisons colours, noises and materials, recreating the prohibited atmosphere of a legendary place and time.*



**Prodotti / Products:**  
Metropolis Factor + Hot Metal  
**Tecnica / Technique:**  
Brooklyn 2

Tecniche e Colori / Techniques and Colours:

BROOKLYN 1



MF 01 + HM 01 MF 01 + HM 02 MF 01 + HM 03 MF 01 + HM 04 MF 01 + HM 05 MF 01 + HM 06 MF 01 + HM 07 MF 01 + HM 08

BROOKLYN 2



MF 01 + HM 01 MF 01 + HM 02 MF 01 + HM 03 MF 01 + HM 04 MF 01 + HM 05 MF 01 + HM 06 MF 01 + HM 07 MF 01 + HM 08

## HARLEM

Rivestimento materico acril-silossanico a spessore, idrorepellente, finito con pitture decorative traspiranti, lavabili, all'acqua. Per interno ed esterno.

*Thick acrylic-siloxane textured coating, water repellent, finished with decorative breathable, washable, water-based paints. For interior and exterior use.*



Prodotti / Products:  
Metropolis Factor + Glam + Hot Metal  
Tecnica / Technique:  
Harlem 1

Cori gospel, ritmi afro, battiti hip-hop: **Harlem** è il regno delle mescolanze, l'incontro delle etnie, lo sprigionarsi dei sapori del Sud. L'effetto Harlem rievoca il clima intenso, la poesia del suono, il calore umano impressi in ogni angolo rigorosamente "black".

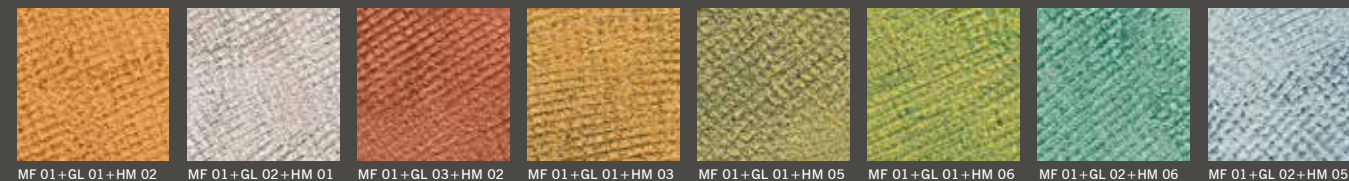
*Gospel choirs, afro rhythms, hip-hop beats: **Harlem** is the kingdom of mixtures, the meeting of cultures, the release of the flavours of the south. The Harlem effect evokes the intense climate, the poetry of sound and the human warmth impressed in each rigorously 'black' corner of the earth.*



Prodotti / Products:  
Metropolis Factor + Acqua.Dolce + Glam  
Tecnica / Technique:  
Harlem 2

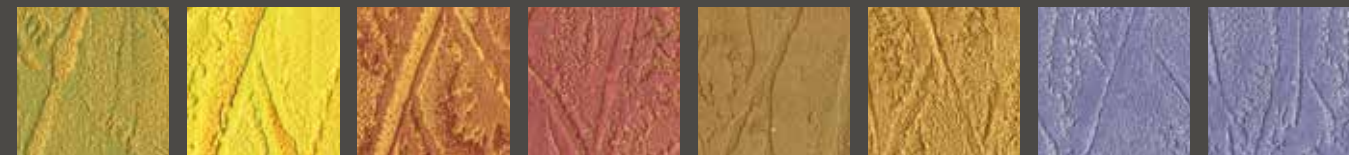
Tecniche e Colori / Techniques and Colours:

HARLEM 1



MF 01+GL 01+HM 02 MF 01+GL 02+HM 01 MF 01+GL 03+HM 02 MF 01+GL 01+HM 03 MF 01+GL 01+HM 05 MF 01+GL 01+HM 06 MF 01+GL 02+HM 06 MF 01+GL 02+HM 05

HARLEM 2



MF 01+IP 475+GL 01 MF 01+IP 467+GL 01 MF 01+IP 484+GL 01 MF 01+IP 499+GL 01 MF 01+IP 475+GL 03 MF 01+IP 489+GL 01 MF 01+IP 440+GL 02 MF 01+IP 511+GL 02

## MANHATTAN

Rivestimento materico acril-silossanico a spessore, idrorepellente, finito con pitture decorative traspiranti, lavabili, all'acqua. Per interno.

*Thick acrylic-siloxane textured coating, water repellent, finished with decorative breathable, washable, water-based paints. For interior use.*



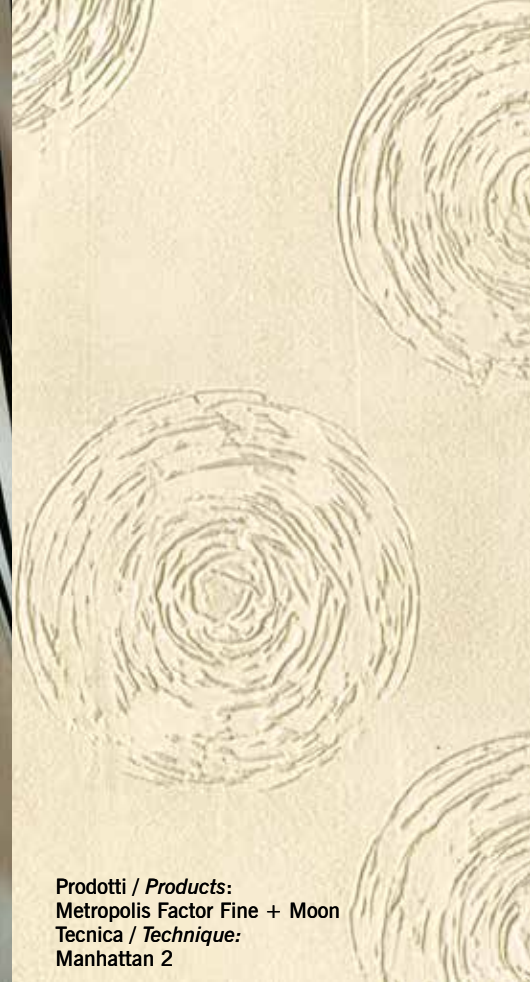
**Prodotti / Products:**  
Metropolis Factor Fine + Moon  
**Tecnica / Technique:**  
Manhattan1

Verticale, lussuosa, snob, maledetta: **Manhattan** rappresenta il crocevia delle tendenze, il faro della modernità, lo specchio delle avanguardie. L'effetto Manhattan racchiude in sé la luce delle grandi vetrate di Soho, il luccichio della mondanità, l'esclusiva vanità dei loft più chic del pianeta.

*Vertical, luxurious, snobbish, cursed: **Manhattan** is the crossroads of trends, the beacon of modernity, the mirror of the avant-garde. The Manhattan effect encloses the lights of the great windows in Soho, the sparkle of society life, the exclusive vanity of the most stylish lofts of the planet.*



**Prodotti / Products:**  
Metropolis Factor Fine + Moon  
**Tecnica / Technique:**  
Manhattan 2



Tecniche e Colori / Techniques and Colours:

MANHATTAN 1



MF 01 + MO 50 MF 01 + MO 61 MF 01 + MO 34 MF 01 + MO 85 MF 01 + MO 46 MF 01 + MO 89 MF 01 + MO 52 MF 01 + MO 32

MANHATTAN 2



MF 01 + MO 50 MF 01 + MO 61 MF 01 + MO 34 MF 01 + MO 85 MF 01 + MO 46 MF 01 + MO 89 MF 01 + MO 52 MF 01 + MO 32



## BERLIN

Rivestimento materico acril-silossanico a spessore, idrorepellente, finito con pitture decorative traspiranti, lavabili, all'acqua. Per interno ed esterno.

*Thick acrylic-siloxane textured coating, water repellent, finished with decorative breathable, washable, water-based paints. For interior and exterior use.*



**Prodotti / Products:**  
Metropolis Factor + Hot Metal + Moon  
**Tecnica / Technique:**  
Berlin 1

Malinconica, sofferente, dinamica, moderna: **Berlino** è la città simbolo del XX secolo, una metropoli "graffiata" dalla storia e allo stesso tempo proiettata nel futuro. L'effetto Berlin illumina lo spazio ricordando il peso della materia, mescola gioia e dolore, terra e metallo, passato e futuro.

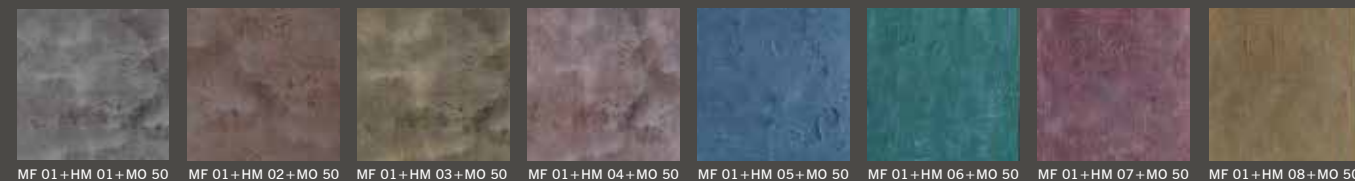
*Melancholic, afflicted, dynamic, modern: **Berlin** a city that symbolizes the 20th century is a metropolis 'scratched' by history and, at the same time, projected towards the future. The Berlin effect illuminates space, remembering the weight of the material, mixing joy and sorrow, earth and metal, past and future.*



**Prodotti / Products:**  
Metropolis Factor + Metro Paper + Hot Metal + Moon  
**Tecnica / Technique:**  
Berlin 2

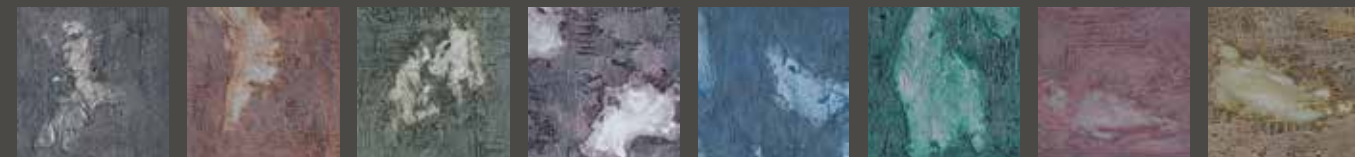
Tecniche e Colori / Techniques and Colours:

BERLIN 1



MF 01+HM 01+MO 50 MF 01+HM 02+MO 50 MF 01+HM 03+MO 50 MF 01+HM 04+MO 50 MF 01+HM 05+MO 50 MF 01+HM 06+MO 50 MF 01+HM 07+MO 50 MF 01+HM 08+MO 50

BERLIN 2



MF 01+HM 01+MO 50 MF 01+HM 02+MO 50 MF 01+HM 03+MO 50 MF 01+HM 04+MO 50 MF 01+HM 05+MO 50 MF 01+HM 06+MO 50 MF 01+HM 07+MO 50 MF 01+HM 08+MO 50

## ISTANBUL

Rivestimento materico acril-silossanico a spessore, idrorepellente, finito con pitture decorative traspiranti, lavabili, all'acqua. Per interno.

Thick acrylic-siloxane textured coating, water repellent, finished with decorative breathable, washable, water-based paints. For interior use.



Prodotti / Products:  
Metropolis Factor+Glam+Soul Cement  
Tecnica / Technique:  
Istanbul 1



Prodotti / Products:  
Metropolis Factor+Glam+Soul Cement  
Tecnica / Technique:  
Istanbul 2

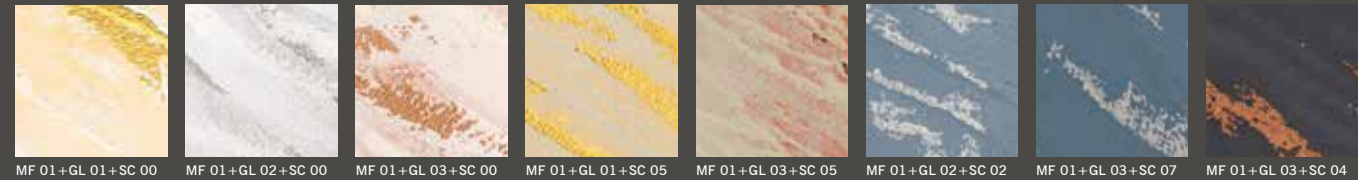


Sfarzosa, caotica, sensuale, lucente: **Istanbul** è il ponte fra Oriente e Occidente, un insieme convulso di oro e argento, prosperità e polvere. L'effetto Istanbul traduce questa molteplicità esprimendo fascino e caos, ricchezza e miseria, materia e splendore.

Lavish, chaotic, sensual and dazzling: **Istanbul** is the bridge between East and West, a convulsive blend of gold and silver, prosperity and dust. The Istanbul effect represents this multiplicity in an expression of fascination and chaos, wealth and misery, material and splendour.

Tecniche e Colori / Techniques and Colours:

ISTANBUL 1



MF 01+GL 01+SC 00 MF 01+GL 02+SC 00 MF 01+GL 03+SC 00 MF 01+GL 01+SC 05 MF 01+GL 03+SC 05 MF 01+GL 02+SC 02 MF 01+GL 03+SC 07 MF 01+GL 03+SC 04

ISTANBUL 2



MF 01+GL 01+SC 06 MF 01+GL 03+SC 06 MF 01+GL 01+SC 08 MF 01+GL 03+SC 08 MF 01+GL 03+SC 01 MF 01+GL 03+SC 07 MF 01+GL 02+SC 03 MF 01+GL 02+SC 04

## JAKARTA

Rivestimento materico acril-silossanico a spessore, idrorepellente, finito con pitture decorative traspiranti, lavabili, all'acqua. Per interno ed esterno.

*Thick acrylic-siloxane textured coating, water repellent, finished with decorative breathable, washable, water-based paints. For interior and exterior use.*



Prodotti / Products:  
Metropolis Factor + Glam + Hot Metal  
Tecnica / Technique:  
Jakarta 1

Misteriosa, millenaria, seducente, mista: **Jakarta** è eternamente sospesa tra ricordi orientali e recenti sapori coloniali. L'effetto Jakarta ripercorre la via dei metalli preziosi e i riflessi di un oriente lontano, raccontando la fusione tra antichi luccichii e vissuto contemporaneo.

*Mysterious, millenary, seducing, mixed: **Jakarta** is eternally suspended between oriental memories and recent colonial flavours. The Jakarta effect retraces the precious metal route and nuances of the Far East that tell how ancient sparkles blend with contemporary life.*



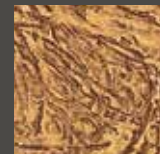
Prodotti / Products:  
Metropolis Factor + Hot Metal + Glam  
Tecnica / Technique:  
Jakarta 2

Tecniche e Colori / Techniques and Colours:

JAKARTA 1



MF 01+GL 02+HM 01



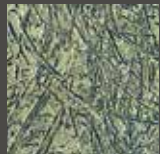
MF 01+GL 01+HM 02



MF 01+GL 01+HM 03



MF 01+GL 01+HM 04



MF 01+GL 01+HM 05



MF 01+GL 01+HM 06



MF 01+GL 01+HM 07



MF 01+GL 01+HM 08

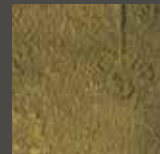
JAKARTA 2



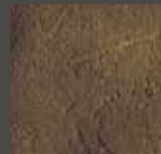
MF 01+HM 01+GL 01



MF 01+HM 02+GL 01



MF 01+HM 03+GL 01



MF 01+HM 04+GL 01



MF 01+HM 05+GL 01



MF 01+HM 06+GL 01



MF 01+HM 07+GL 01



MF 01+HM 08+GL 01

## METROSTONE

Ciclo a spessore a base di eco-resine cementizie, traspiranti, non ingiallenti, resistenti all'abrasione; finito con resina poliuretanicca all'acqua.  
Per pavimenti e pareti.

*Thick cement-based resins system eco-friendly and breathable. Non yellowing, resistant to abrasion, finished with water-based polyurethane resin. For walls and floors.*

Prodotti / Products:  
Ciclo Metrostone / Metrostone System  
Tecnica / Technique:  
Effetto ossidato / Oxidised effect



Tono su tono / Tone on tone:



MS 00



MS 01



MS 02



MS 04



MS 05



MS 06



MS 07



MS 08



MS 09



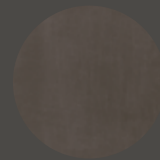
MS 10



MS 11



MS 12



MS 13



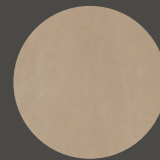
MS 14



MS 15



MS 16



MS 17



MS 18

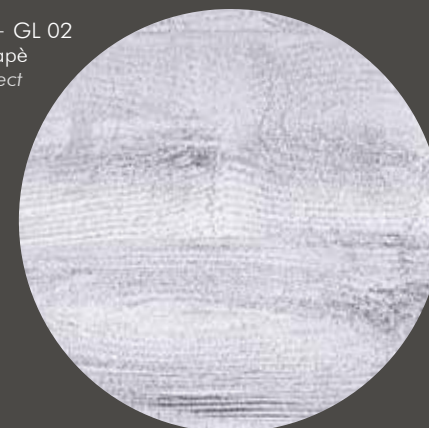
MS 03  
Effetto cemento liscio  
Smooth cement effect  
Per pavimenti e pareti  
For floors and walls



MS 05 + MS 16 + HM  
08  
Effetto ossidato  
Oxidised effect  
Per pavimenti e pareti  
For floors and walls



MS 00 + HM 01 + GL 02  
Effetto vintage decapè  
Vintage decapè effect  
Per pareti  
For walls



METROSTONE



Prodotti / Products:  
Ciclo Metrostone / Metrostone System  
Tecnica / Technique:  
Effetto cemento liscio / Smooth cement effect

METROSTONE



Prodotti / Products:  
Ciclo Metrostone / Metrostone System  
Tecnica / Technique:  
Effetto ossidato / Oxidised effect

## METRORESIN

Ciclo a spessore a base di resine poliuretaniche non ingiallenti, resistente all'abrasione e agli agenti chimici, all'acqua.  
Per pavimenti e pareti.

*Polyurethane resin-based system, non yellowing, resistant to abrasion and chemicals, water-based.  
For floors and walls.*

Prodotti / Products:  
Ciclo Metroresin / Metroresin System  
Tecnica / Technique:  
Venato tono su tono / Veined tone on tone



## Variazioni di Grigio Gray shades

MANCHESTER Tono su tono / Tone on tone:

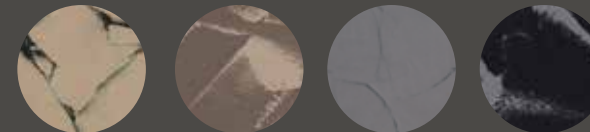


MN 01 MN 02 MN 03 MN 04



MN 05 MN 06 MN 07 MN 08

MANCHESTER Bicolore / Bicolour:



MN 04 + MN 01 MN 01 + MN 02 MN 08 + HE 05 MN 05 + HE 08

## Variazioni di Blu Blue shades

HELSINKI Tono su tono / Tone on tone:



HE 01 HE 02 HE 03 HE 04



HE 05 HE 06 HE 07 HE 08

HELSINKI Bicolore / Bicolour:



HE 03 + HE 02 HE 01 + HE 04 HE 08 + HE 05 HE 05 + HE 08

## Variazioni di Bianco White shades

MIAMI Tono su tono / Tone on tone:



MI 01 MI 02 MI 03 MI 04



MI 05 MI 06 MI 07 MI 08

MIAMI Bicolore / Bicolour:



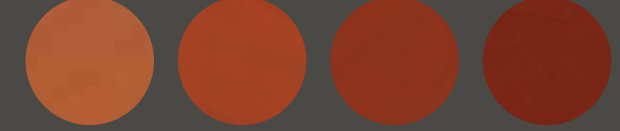
MI 04 + MI 01 MI 08 + MI 05 MI 07 + MI 04 MI 04 + MI 07

## Variazioni di Rosso Red shades

MARRAKECH Tono su tono / Tone on tone:



MR 01 MR 02 MR 03 MR 04

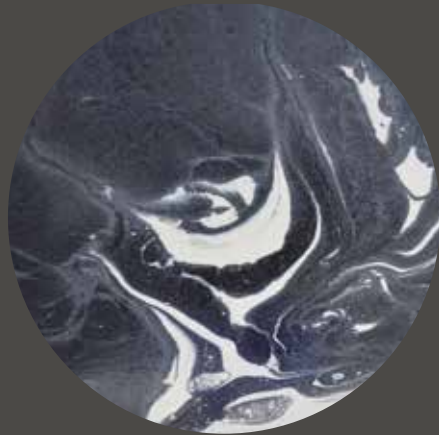


MR 05 MR 06 MR 07 MR 08

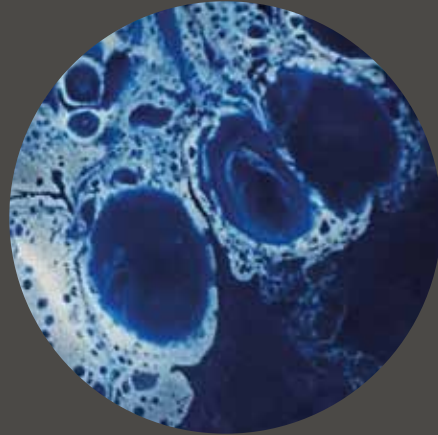
MARRAKECH Bicolore / Bicolour:



MR 01 + MR 02 MR 02 + MR 04 MR 08 + MR 05 MR 05 + MR 08



Metropox View NY Special



## METROPOX

Ciclo autolivellante a base di resine epossidiche all'acqua, esente da solventi.  
Per pavimentazioni.

*Self-levelling epoxy resin system,  
water-based, solvent free.  
For floorings.*

Colori disponibili / Available Colours:

Metropox - disponibile in tutte le tinte RAL / available in all RAL fandeck colours

Metropox View NY Special - nero, bianco, blu / black, white and blue

Metropox View Special - solo trasparente / transparent colour only



Metropox View NY



Metropox



Metropox

## ITALIANO

Le pitture e le resine decorative Metropolis by Ivas sono prodotti all’acqua, eco-compatibili, esenti da solventi, tutti rigorosamente ideati e fabbricati in Italia, nello stabilimento produttivo di Ivas Spa, azienda leader del settore pitture e vernici, certificata UNI EN ISO 9001. Le varianti cromatiche presentate in questo catalogo sono riproduzioni fotografiche degli originali, hanno quindi valore indicativo. I prodotti Metropolis by Ivas presentati in questo catalogo sono oggetto dei corsi Metropolis presso Academy, centro di formazione professionale di Gruppo Ivas, certificato UNI EN ISO 9001. Per maggiori informazioni sui prodotti, sulle tecniche di posa, sulle applicazioni in esterno, sui corsi di formazione e altro, consultare il sito web [www.metropolis-ivas.com](http://www.metropolis-ivas.com) o contattare il servizio di assistenza clienti di Ivas Spa.

**Tutti i contenuti (testo,grafica e immagini) presenti all'interno di questo documento sono protetti dal diritto d'autore e non sono riproducibili salva autorizzazione scritta dal titolare.**

## ENGLISH

The Metropolis by Ivas paints and decorative resins are environmentally friendly, water-based products that are completely solvent free. They are manufactured exclusively in the Italian Ivas Spa production plant, the UNI EN ISO 9001 certified leader in the field of paint. The colours presented in this catalogue are photographs of the originals and are thus purely indicative. Academy, the Gruppo Ivas UNI EN ISO 9001 certified professional training centre, offers courses about the Metropolis by Ivas products presented herein. For further information on the products, installation techniques, outdoor applications, training courses and anything else, log onto [www.metropolis-ivas.com](http://www.metropolis-ivas.com) or contact Ivas Spa customer service. **All content (text, graphics and images) is protected by copyright. Reproduction is prohibited without prior written authorization from the owner.**

## ESPAÑOL

Las pinturas y resinas decorativas Metropolis by Ivas son productos al agua, eco-compatibles, sin disolventes; todas ellas han sido rigurosamente concebidas y fabricadas en Italia, en las instalaciones de producción de Ivas Spa, empresa líder del sector pinturas y barnices, certificada UNI EN ISO 9001. Las variantes cromáticas presentadas en este catálogo son reproducciones fotográficas de los originales, de modo que tienen un valor indicativo. Los productos Metropolis by Ivas presentados en este catálogo son objeto de los cursos Metropolis en Academy, centro de formación profesional de Gruppo Ivas, certificado UNI EN ISO 9001. Para más información sobre los productos, las técnicas de aplicación, los usos en exteriores, los cursos de formación, etc., consultar la web [www.metropolis-ivas.com](http://www.metropolis-ivas.com) o contactar al servicio de asistencia al cliente de Ivas Spa.

**Todos estos contenidos (texto, graficas e imagenes) estan protegidos por los derechos de autor y no pueden ser reproducidos sin la autorizacion previa y por escrito del propietario.**

## FRANÇAIS

Le logo Metropolis by Ivas Academy, qui est un logo de la marque Metropolis by Ivas, est protégé par le droit de propriété intellectuelle. Toute réimpression ou utilisation non autorisée sans la permission écrite de la société Ivas SpA est formellement interdite. Toute réimpression ou utilisation non autorisée sans la permission écrite de la société Ivas SpA est formellement interdite.

**Tous ces contenus (texte, graphique et imagines) sont proteges par le droit d’auter et ils ne peuvent etre pas reproductibles, si non au moyen de l’autorisation preliminaire ecrite du proprietiae**

## DEUTSCH

Das Logo Metropolis by Ivas Academy, das ein Logo der Marke Metropolis by Ivas ist, ist durch das Urheberrecht geschützt. Nachdruck oder Verwendung ohne schriftliche Genehmigung von Ivas SpA ist ausdrücklich untersagt.

**Alle Inhalte (Text, Grafik und Bilder) dieses Dokuments sind urheberrechtlich geschützt und dürfen nicht ohne schriftliche Genehmigung des Inhabers vervielfältigt werden.**

### POLSKI

Logo

Farby i żywice dekoracyjne Metropolis by Ivas są przyjaznymi dla środowiska produktami na bazie wody i nie zawierają rozpuszczalników. Wszystkie te produkty zostały opracowane i wyprodukowane we Włoszech według rygorystycznych norm - w zakładzie produkcyjnym firmy Ivas Spa, która uznawana jest za wiodącego przedstawiciela sektora farb i lakierów oraz która posiada certyfikację za zgodność z normą UNI EN ISO 9001. Odcienie kolorów przedstawione w tym katalogu stanowią reprodukcje fotograficzne kolorów oryginalnych, a zatem traktować je należy jako orientacyjne. Dla produktów Metropolis by Ivas przedstawionych w tym katalogu prowadzone są kursy Metropolis wAcademy - centrum szkoleń profesjonalnych Gruppo Ivas, posiadającym certyfikat za zgodność z normą UNI EN ISO 9001. Więcej informacji o naszych produktach, technikach nakładania, zastosowaniach zewnętrznych, szkoleniach itp. znaleźć można na stronie internetowej [www.metropolis-ivas.com](http://www.metropolis-ivas.com). Zachęcamy również do kontaktu z punktem obsługi klienta firmy Ivas Spa.

**Wszystkie treści (tekst, elementy graficzne i obrazy) zawarte w niniejszym dokumencie chronione są prawem autorskim, a zatem obowiązuje zakaz ich powielania bez pisemnego pozwolenia ze strony właściciela.**

## РУССКИЙ

Logo

Декоративные краски и смолы Metropolis by Ivas являются экологически чистыми продуктами на водной основе, не содержащими растворителей. Вся продукция разрабатывается и производится в Италии на предприятии Ivas Spa, компании-лидера в области производства лакокрасочных материалов, имеющей сертификат UNI EN ISO 9001. Цветовые варианты, представленные в этом каталоге, являются фотографиями с оригинала и поэтому приводятся исключительно в наглядных целях. Продукция Metropolis by Ivas, представленная в этом каталоге, применяется на курсах Metropolis, которые проводятся в Academy - центре профессиональной подготовки Gruppo Ivas, имеющем сертификат UNI EN ISO 9001. Более подробную информацию о продукции, методах ее нанесения, применении для наружных работ, обучающих курсах и других аспектах можно получить на сайте [www.metropolis-ivas.com](http://www.metropolis-ivas.com) или обратившись в отдел обслуживания клиентов компании Ivas Spa.

Все содержание (текст, графическое оформление и изображения) этого документа защищено законом об авторских правах. Запрещено воспроизводить его без письменного разрешения владельца авторских прав.

## ΕΛΛΗΝΙΚΑ

Logo

Οι διακοσμητικές βαφές και ρητίνες Metropolis by Ivas είναι προϊόντα νερού, φιλικά προς το περιβάλλον, απαλλαγμένα από διαλύτες, όλα απολύτως επινοημένα και κατασκευασμένα στην Ιταλία, στην εγκατάσταση παραγωγής της Ivas Spa, ηγετικής επιχείρησης του τομέα βαφών και ρητινών, με πιστοποίηση UNI EN ISO 9001. Οι χρωματικές παραλλαγές που παρουσιάζονται σε αυτό τον κατάλογο είναι φωτογραφικές αναπαραγωγές των αυθεντικών, κατ’ επέκταση έχουν ενδεικτική σημασία. Τα προϊόντα Metropolis by Ivas που παρουσιάζονται σε αυτό τον κατάλογο είναι αντικείμενο των μαθημάτων Metropolis στο Academy, κέντρο επαγγελματική κατάρτισης του Gruppo Ivas, με πιστοποίηση UNI EN ISO 9001. Για περισσότερες πληροφορίες σχετικά με τα προϊόντα, τις τεχνικές τοποθέτησης, τις εφαρμογές σε εξωτερικές επιφάνειες, τα μαθήματα κατάρτισης και άλλα, συμβουλευτείτε το web site [www.metropolis-ivas.com](http://www.metropolis-ivas.com) ή επικοινωνήστε με την εξυπηρέτηση πελατών της Ivas Spa.

Όλα τα περιεχόμενα (κείμενο, γραφικά και εικόνες) που βρίσκονται εντός αυτού του εγγράφου είναι προστατευόμενα με το δικαίωμα πνευματικής ιδιοκτησίας και δεν μπορούν να αναπαράγονται χωρίς γραπτή εξουσιοδότηση από το δικαιούχο.

## العربية

Logo

Metropolis by Ivas装饰涂料和树脂都是水性产品，环保且不含溶剂，所有产品都在意大利境内Ivas Spa股份公司的工厂内严格设计和制造，本公司是涂料和漆料行业内的领先企业，拥有UNI EN ISO 9001认证。在本目录中介绍的色彩系列为原产品的实拍照片，因此仅供参考。在本目录中介绍的Metropolis by Ivas产品均为Gruppo Ivas集团旗下职业培训中心Academy的Metropolis课程的教学主题，中心拥有UNI EN ISO 9001认证。如要获知更多有关产品的信息，包括安装技术、室外应用、培训课程及其他，请浏览网站 [www.metropolis-ivas.com](http://www.metropolis-ivas.com) 或联系Ivas Spa股份公司的客服。

本目录中含有的所有内容（文字、设计图和图片）均受作者版权保护，除非获得书面授权不得进行任何复制。









by IVAS®



Metropolis App



Metropolis Ivas



metropolis\_ivas



Metropolis by Ivas



@metropolis\_ivas



Metropolis Ivas

[www.metropolis-ivas.com](http://www.metropolis-ivas.com)



IVAS industria vernici s.p.a. - via Bellaria, 40 - 47030 San Mauro Pascoli (FC) Italy  
phone +39 0541 815811 - fax +39 0541 815815



Company with quality management  
system certified UNI EN ISO 9001