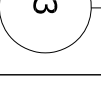
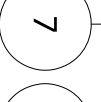
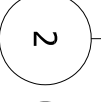
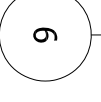
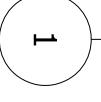
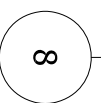
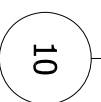
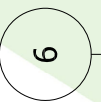
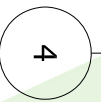
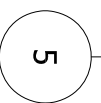


LEGENDA

- 1 MONTANTE T1
- 2 STAFFAL
- 3 TASSELLO CHIMICO
- 4 RIVETTO TL
- 5 CLIP DI FISSAGGIO
- 6 RIVETTO
- 7 THERMOSTOP
- 8 LASTRA IN GRES PORCELLANATO
- 9 LAMIERA
- 10 LANA MINERALE CLASSE A1* CON VELO VETRO ALL'ESTERNO

LEGEND

- 1 T1 MULLION
- 2 L BRACKET
- 3 CHEMICAL ANCHOR
- 4 TL RIVET
- 5 RETAINING CLIP
- 6 RIVET
- 7 THERMOSTOP
- 8 PORCELAIN STONEWARE TILE
- 9 WINDOW REVEAL
- 10 A1* CLASS MINERAL WOOL WITH FIBERGLASS EXTERNAL LAYER



(*) Raccomandato dai Vigili del Fuoco
 (*) Recommended by the Fire Authority (FRS)

ALIVA®
 SISTEMI
 PER FACCIATE

NEXOCOVERING

Sezione Orizzontale con Imbotti - Horizontal Section with Window Reveals