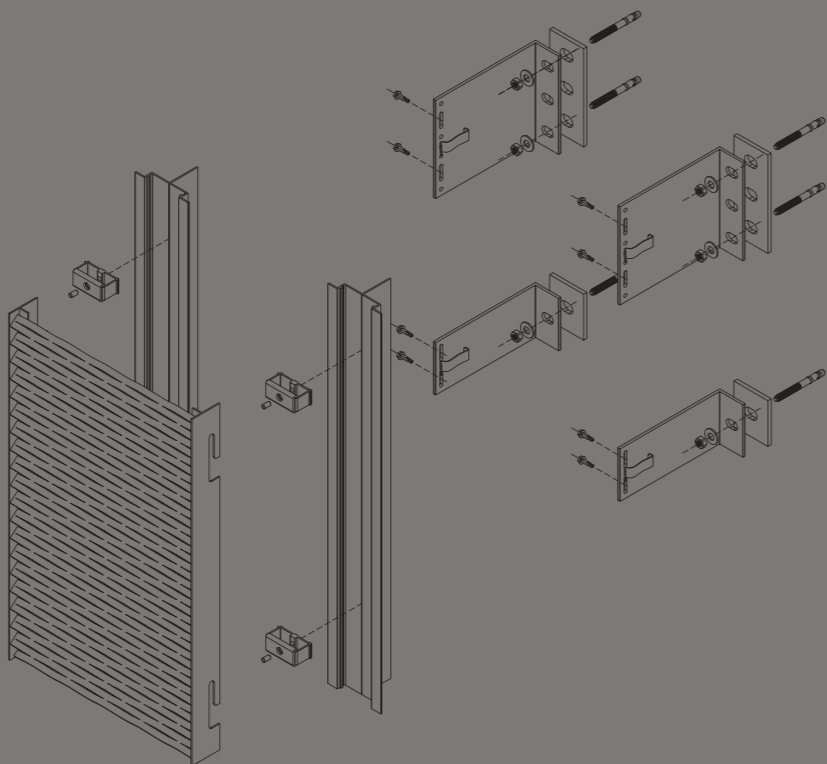
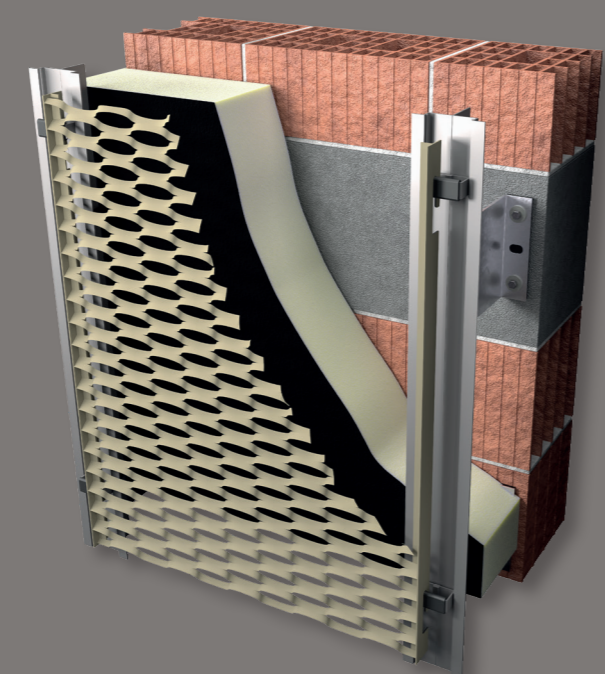
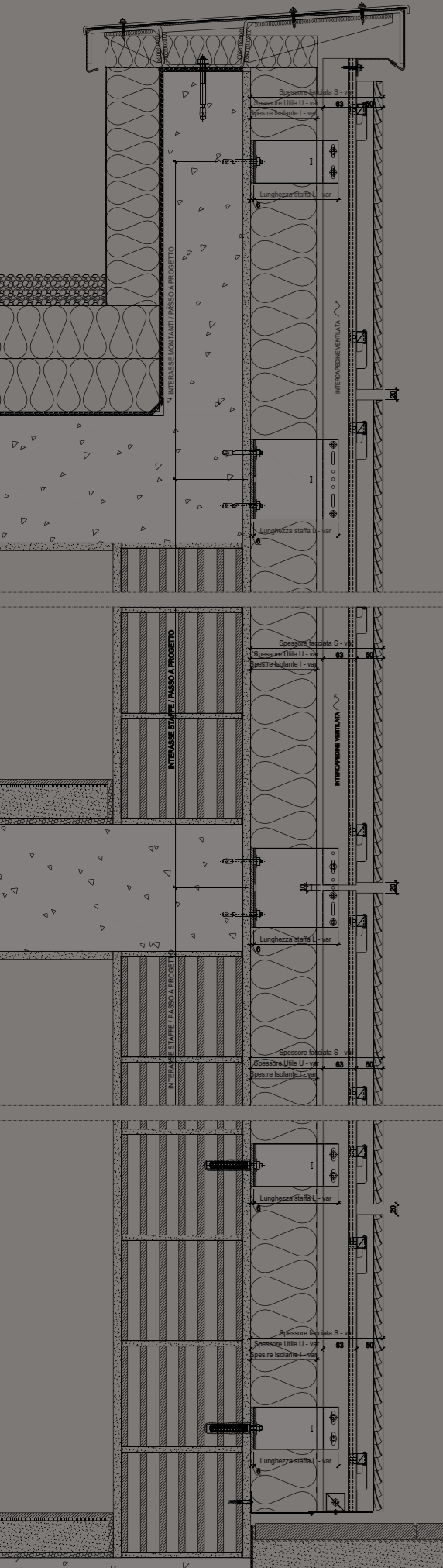


Mesh.covering

SCHEDA TECNICA



Informazioni tecniche
Technical information
Información técnica

Dimensioni massime dei pannelli
Maximum panel dimensions
Tamaño máximo de los paneles

Spessore dei pannelli
Panel thickness
Espesor de los paneles

Orientamento del pannello
Panel orientation
Orientación del panel

Materiale
Material
Material

Fuga
Joint
Junta

Fissaggio
Fastening
Fijación

Superfici
Surfaces
Superficies

Design life del sistema completo
Design life of the complete system
Vida de diseño del sistema completo

Reazione al fuoco secondo EN 13501-1
Reaction to fire according to EN 13501-1
Reacción al fuego según la EN 13501-1

Peso sistema completo di sottostruttura
Weight of the system with substructure
Peso del sistema con subestructura

Disponibile in versione Tailor Made?
Tailor Made version available?
¿Disponibile en versión Tailor Made?

Mesh.covering

1500x3200 mm

> 1,5 mm

Orizzontale o verticale
Horizontal or vertical
Horizontal o vertical

Reti stirate in lega d'alluminio
Expanded aluminium alloy mesh
Mallas de aleación de aluminio expandidas

8 mm

A scomparsa
Concealed
Ocultas

Verniciato standard o materico, anodizzato, sublimato effetto legno o pietra.
Standard painted or textured, anodised, sublimated wood or stone effect.
Pintado estándar o matérico, anodizado, sublimado efecto madera o piedra.

> 30 anni
> 30 years
> 30 años

A1 / A2 s1 d0

da 10 kg/m²
from 10 kg/m²
de 10 kg/m²

Si
Yes
Sí



Recyclability



Recycled content



Easy installation



Impact resistance



Chemicals resistance



Easy cleaning



A1 Fire reaction



Resistance to atmospheric agents



Single panel replacement