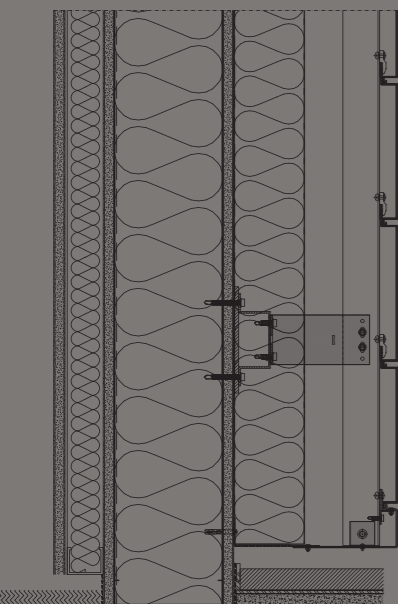
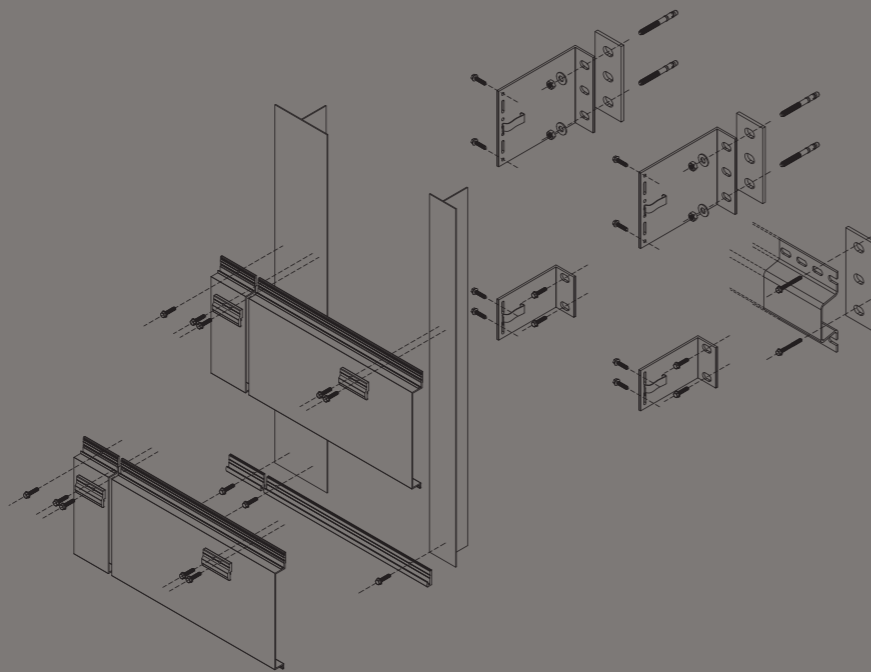
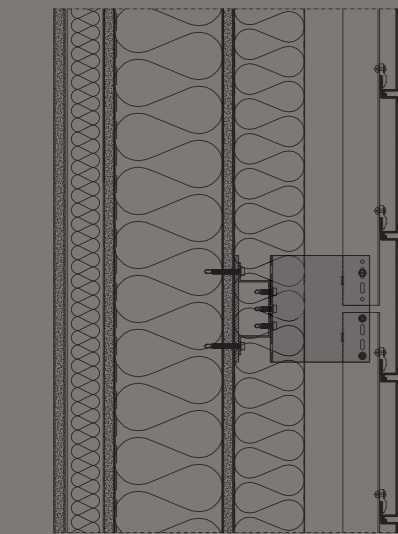
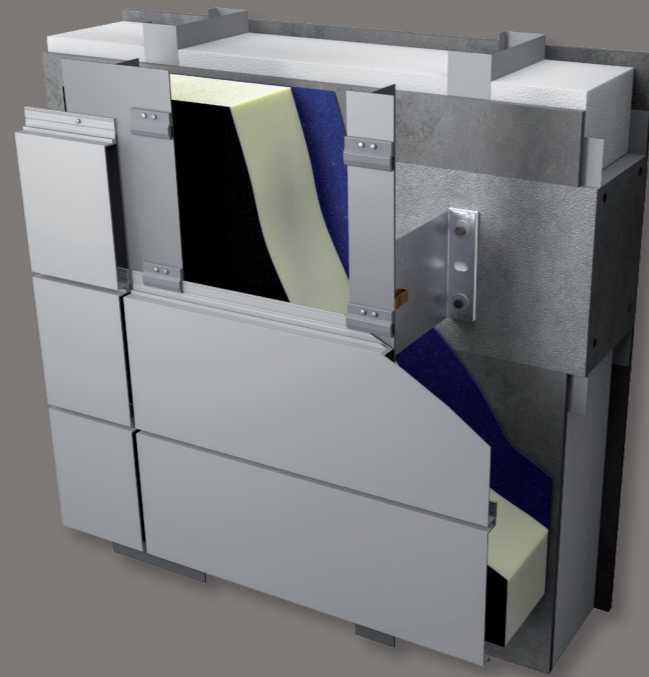
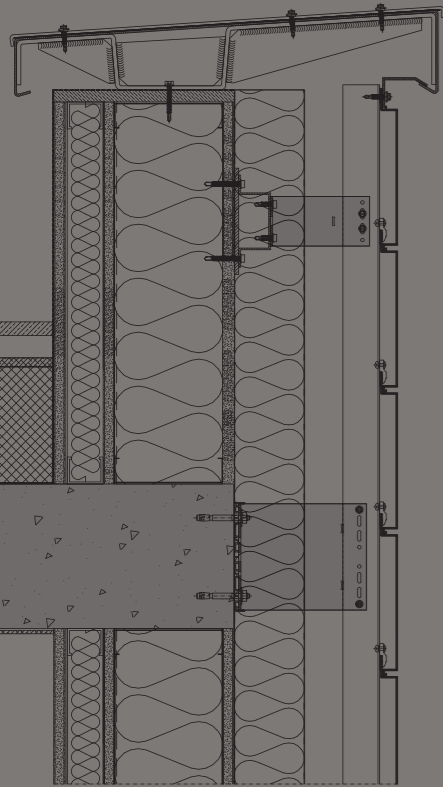


# Alu.covering

DATA SHEET



## Technical information

Información técnica  
Informazioni tecniche

## Maximum panel dimensions

Tamaño máximo de los paneles  
Dimensioni massime dei pannelli

## Panel thickness

Espesor de los paneles  
Spessore dei pannelli

## Panel orientation

Orientación del panel  
Orientamento del pannello

## Material

Material  
Materiale

## Joint

Junta  
Fuga

## Fastening

Fijación  
Fissaggio

## Surfaces

Superficies  
Superfici

## Design life of the complete system

Vida de diseño del sistema completo  
Design life del sistema completo

## Reaction to fire according to ASTM E-84

Reacción al fuego según la EN 13501-1  
Reazione al fuoco secondo EN 13501-1

## Weight of the system with substructure

Peso del sistema con subestructura  
Peso sistema completo di sottostruttura

## Tailor Made version available?

¿Disponible en versión Tailor Made?  
Disponibile in versione Tailor Made?

## Alu.covering

### 12" BY 500"

300x13000 mm  
300x13000 mm

### > 0,080" Nom.

> 2 mm  
> 2 mm

### Horizontal or vertical

Horizontal o vertical  
Orizzontale o verticale

### Extruded aluminum alloy panels

Listones extruidos en aleación de aluminio  
Doghe estruse in lega d'alluminio

### 5/16" nom.

8 mm  
8 mm

### Concealed, overlapping joints

Ocultas, juntas solapadas  
A scomparsa, fughe a sormonto

### Standard painted or textured, anodized, sublimated wood or stone effect, decorated.

Pintado estándar o matérico, anodizado, sublimado efecto madera o piedra, decorado.  
Verniciato standard o materico, anodizzato, sublimato effetto legno o pietra, decorato.

### > 30 years

> 30 años  
> 30 anni

### A Class

A1/ A2 s1 d0  
A1/ A2 s1 d0

### from 2 lb/sf

de 10 kg/m<sup>2</sup>  
da 10 kg/m<sup>2</sup>

### Yes

Sí  
Sì



Recyclability



Recycled content



Easy installation



Impact resistance



Chemicals resistance



Easy cleaning



Fire reaction



Resistance to atmospheric agents

