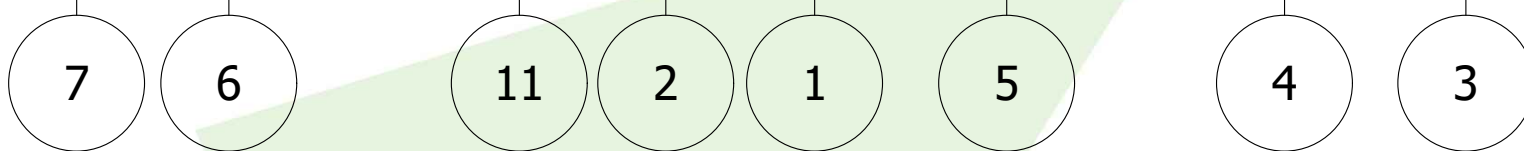
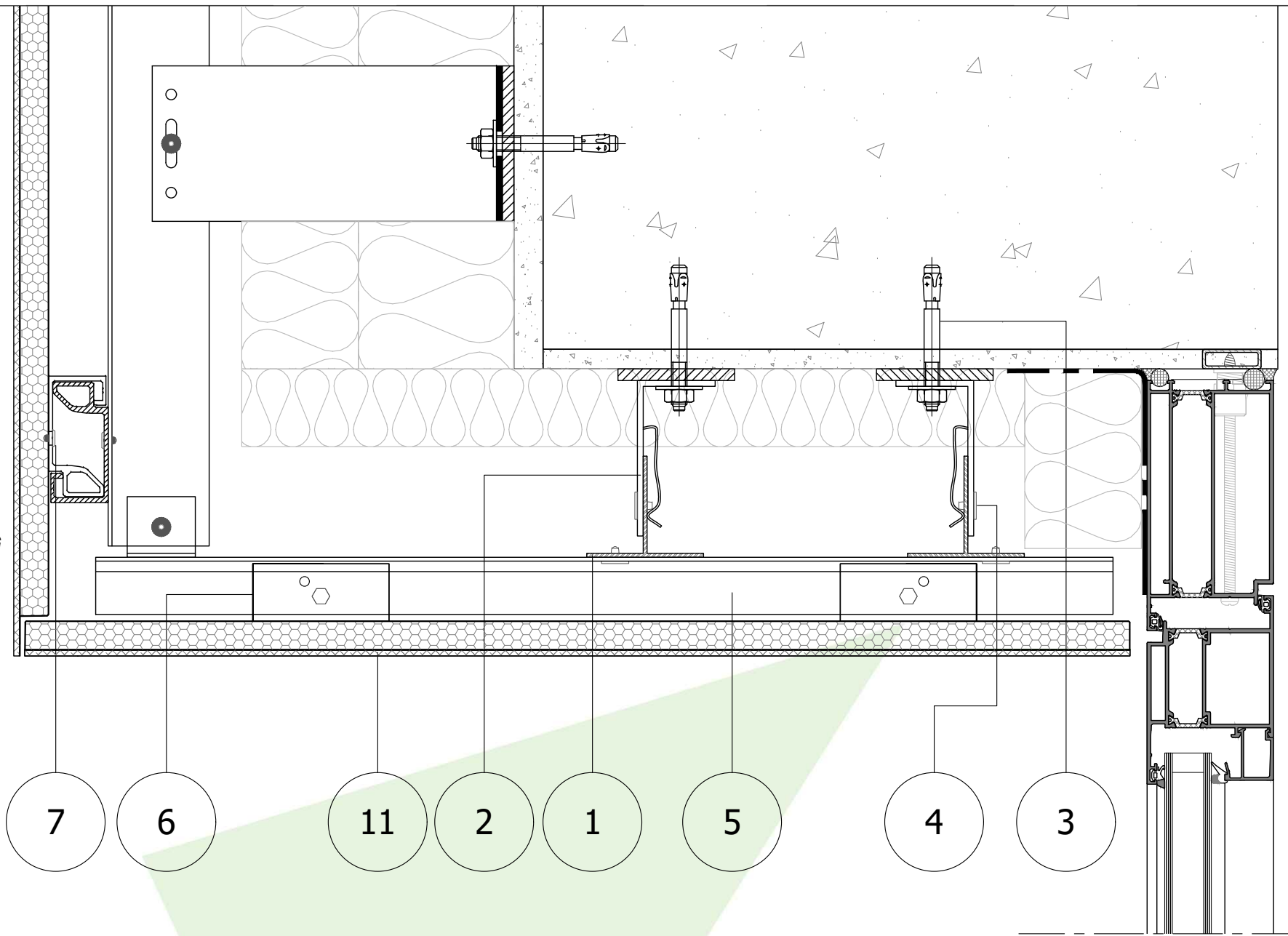


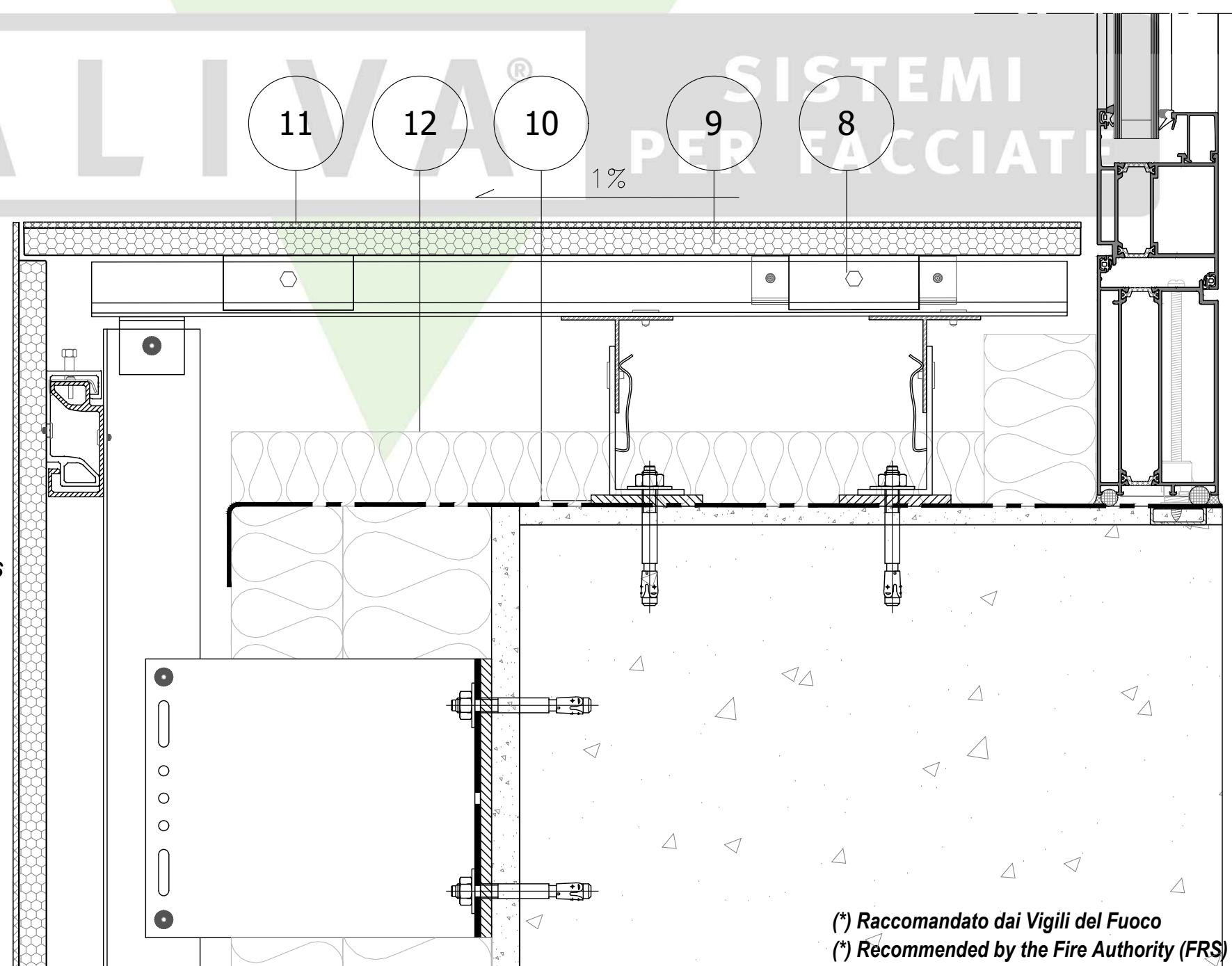
LEGENDA

- 1 MONTANTE T1
- 2 STAFFA L (con molla)
- 3 TASSELLO
- 4 RIVETTO TL
- 5 CORRENTE ORAS
- 6 GRAFFA DI TENUTA
- 7 RIVETTO
- 8 GRAFFA DI REGOLAZIONE CON SISTEMA DI BLOCCO
- 9 PANNELLO ARIACOVERING
- 10 THERMOSTOP
- 11 LASTRA DI FINITURA
- 12 LANA MINERALE CLASSE A1* CON VELO VETRO ALL'ESTERNO



LEGEND

- 1 T1 MULLION
- 2 L BRACKET (with spring)
- 3 ANCHOR
- 4 TL RIVET
- 5 ORAS PROFILE
- 6 FIXING FASTENER
- 7 RIVET
- 8 ADJUSTABLE FASTENER WITH LOCKING SYSTEM
- 9 ARIACOVERING PANEL
- 10 THERMOSTOP
- 11 FINISHING TILE
- 12 MINERAL WOOL A1*CLASS WITH A FIBERGLASS EXTERNAL LAYER



(*) *Raccomandato dai Vigili del Fuoco*
 (*) *Recommended by the Fire Authority (FRS)*

ARIACOVERING

Vertical section with ceramic reveal